
Contents

- 1. Adapt to survive: How better alignment between talent and opportunity can drive economic growth***
- 2. Infographic***
- 3. Germany***
- 4. Germany (German version)***
- 5. UK***
- 6. US***

Adapt to survive

How better alignment between talent and opportunity can drive economic growth

*A global study by PwC
into the value gained by a
better talent fit*

Commissioned by LinkedIn



Contents

Introduction	1
Key findings	3
What is adaptable talent?	4
Why are some countries more adaptable than others?	6
1. Adaptability could unlock up to USD130 billion in additional productivity	8
2. The skills gap will narrow with increased adaptability	10
3. Compromising on talent costs the global economy	12
4. Visibility from online professional networks leads to better hiring	14
Our recommendations	
For individuals	20
For employers	22
For educators	23
For governments	24
Methodology	26
Contacts	29



Introduction

Economies survive by continually responding to the world around them. This means harnessing new technologies or exploiting new international markets in pursuit of growth.

Today, these global shifts – seismic shocks to economies – occur more frequently, are more complex and, in knowledge-based economies are more dependent on talent than ever.

In countries where a workforce lacks the skills that are suddenly in demand, we see a skills gap emerge. This leads to higher unemployment rates while vacancies increase and productivity and growth decline.

A global study by PwC into the value gained by a better talent fit

Commissioned by LinkedIn



So how can economies survive?

By adapting. But unlike the macro-strategies of the last century, people – not just policy – must drive today's adaptability.

Employers and policymakers have long highlighted the importance of a flexible workforce, but until now it has been difficult to isolate the human element – the willingness and ability of employees to seek out and find opportunities across multiple employers, locations and industries.

Our new ability to measure it and analyse talent adaptability – and to start to understand what drives it – are crucial steps forward.

Adapt to Survive for the first time brings together the two most comprehensive sources of talent data in the world: the real-time behaviours drawn from LinkedIn's 277 million members and employer information from PwC's Saratoga database of people and performance metrics, which covers more than 2,600 employers across the globe.

This report sets a new benchmark for evaluating a country's ability to match talent with opportunity and the movement of people between industries – the Talent Adaptability Score. This score is given to 11 countries: Australia, Brazil, Canada, China, France, Germany, India, the Netherlands, Singapore, the US and the UK. For each country, we evaluate how the Score impacts economic performance.

Our recommendations are organised around four stakeholder groups:

- **Individuals** – Future-proof your career
- **Employers** – Seek out, nurture and reward adaptable talent
- **Educators** – Offer courses and job training that produce adaptable people
- **Governments** – Create a climate of adaptability



Key findings



Adaptability unlocks up to USD130 billion in additional productivity

Markets with the most adaptable talent are more efficient and productive – a better talent fit between employer and employee results in a greater return on an organisation's investment in people, unlocking USD130 billion of additional productivity for the 11 countries covered in this report.



The skills gap will narrow with increased adaptability

Worldwide unemployment continues to rise while jobs go unfilled. Half of all CEOs globally intend to increase their headcount over the next year, but 63% are worried about the availability of key skills. As talented people become more adaptable, the skills gap will shrink, leading to better economic performance.



Compromising on talent costs the global economy

In less adaptable talent markets, poorly matched candidates drive up recruitment costs associated with hiring and onboarding people. The hiring process takes longer and recruits don't stay. This creates a cost burden of USD19.8 billion a year for the 11 countries covered in this report.



Visibility from online professional networks leads to better hiring

Online professional networks give organisations access to a larger talent pool and critically, to passive candidates as well as those actively looking for a job. Similarly, talented people can explore well beyond their own borders and have access to far more information on potential employers.

What is adaptable talent?

The capacity of a market to match supply and demand efficiently depends on the ability and willingness of employers and employees to adapt to changing circumstances and align skills with available opportunities. If this alignment is less than perfect, a mismatch occurs and optimum productivity can't be reached.

There are two essential ingredients to adaptability. First the ability of employers to look differently at sources of talent. This means investigating new geographies and sectors as sources of new talent as well as investing in existing employees, equipping them with the necessary skills and motivating them to adapt to meet new challenges. Secondly of course, this requires willing individuals who are prepared to embrace change and apply their skills somewhere new. In order to assess adaptability in a particular market we need to look at both sides of the equation.

We've used LinkedIn and PwC Saratoga data to assess the primary indicators of an adaptable market including the rate at which people switch between roles and sectors, the rate at which they're promoted and the number of jobs left open in a market.¹ The resulting Talent Adaptability Score, which measures the adaptability of the 11 countries we researched side by side, shows a wide variety in adaptability across geographic markets, with the Netherlands coming out on top and China and India ranking lowest.

¹ See Appendix for the full methodology and measures used

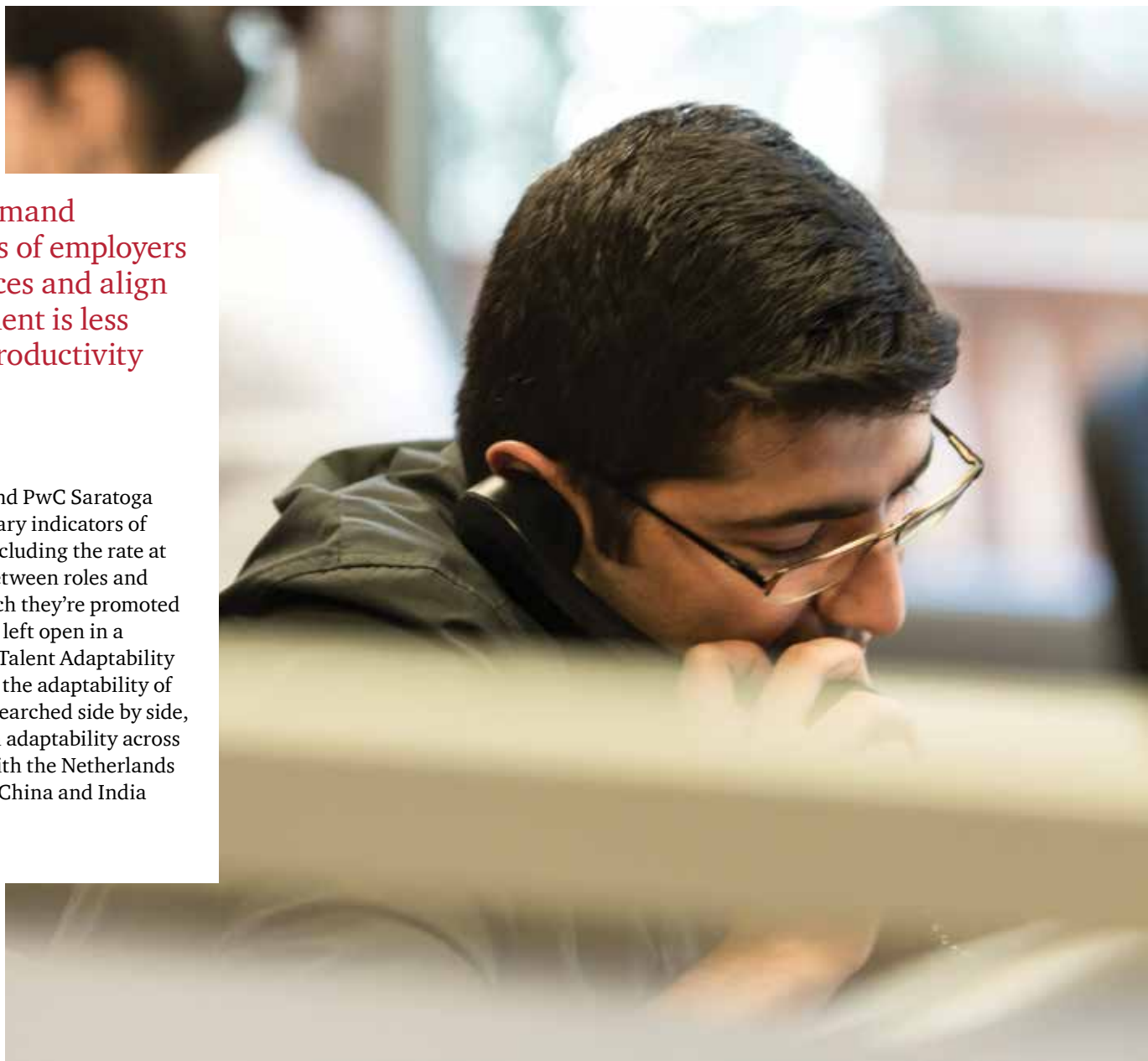
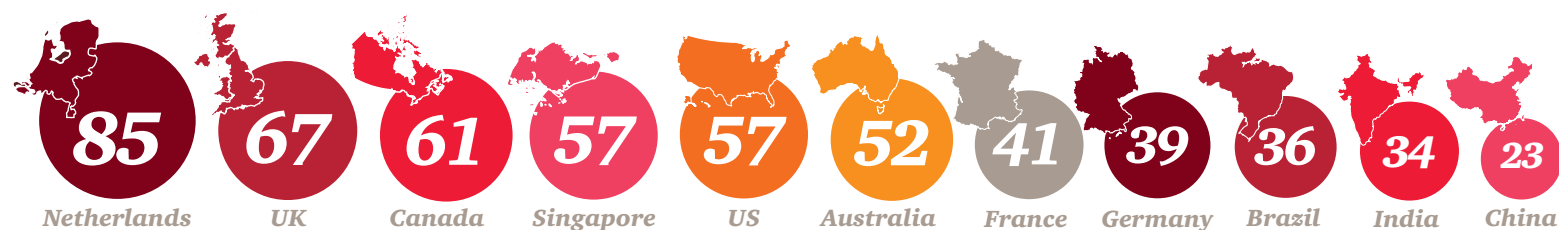


Figure 1: Talent Adaptability Score



Sources: LinkedIn, PwC Saratoga

Figure 2: Talent Adaptability Score

	Promotion rates (Scaled for growth) ¹	Vacancy rate ²	Average number of profile positions ³	Average number of employers ⁴	Industry switching rate ⁵	Talent Adaptability Score
Netherlands	6.7% (2nd)	1.3% (5th)	4.5 (1st)	2.5 (2nd)	1.1% (1st)	85
United Kingdom	3.1% (4th)	1.7% (8th)	4.2 (4th)	2.4 (3rd)	0.7% (7th)	67
Canada	3.3% (3rd)	1.4% (6th)	4.0 (6th)	2.3 (7th)	0.8% (3rd)	61
Singapore	9.1% (1st)	1.6% (7th)	3.9 (7th)	2.4 (4th)	0.4% (11th)	57
United States	2.7% (5th)	2.7% (9th)	3.8 (8th)	2.3 (6th)	0.8% (5th)	57
Australia	0.9% (8th)	1.1% (4th)	4.5 (2nd)	2.5 (1st)	0.6% (8th)	52
France	2.9% (5th)*	0.9% (2nd)	4.0 (5th)	2.3 (5th)	0.6% (9th)	41
Germany	2.9% (5th)*	1.0% (3rd)	4.2 (3rd)	2.3 (8th)	0.5% (10th)	39
Brazil	2.9% (5th)*	1.3% (6th)*	3.4 (9th)	2.1 (10th)	0.8% (6th)	36
India	2.4% (6th)	1.3% (6th)*	2.7 (11th)	1.8 (11th)	1.0% (2nd)	34
China	2.3% (7th)	0.7% (1st)	3.4 (10th)	2.1 (9th)	0.8% (4th)	23

*Median figure for countries analysed; specific country data unavailable

¹ PwC Saratoga data 2013

² National Statistics offices for each country

³ LinkedIn data 2013

⁴ LinkedIn data 2013

⁵ LinkedIn data 2013

Why are some countries more adaptable than others?

The Talent Adaptability Score for each country can be explained to some extent by variations in policy – employment or visa legislation – as well as less quantifiable, but no less important, cultural differences such as people’s willingness to relocate for work. These differences are compounded by each country’s development stage.

The lower scores of Brazil, India and China may be explained in part by a lack of sector diversity – in developing markets a small number of sectors tend to dominate the workplace and so skills tend to be more concentrated. Net migration is also influential; Brazil, India and China have seen more people leave their nations than arrive in recent years,² although this may slow or even reverse as their domestic economies continue to develop.

By contrast, the US gains over 1.1 million people a year, many with science, technology and engineering skills. The ability of US companies to harness – and efficiently accommodate – these skills will be critical to its ability to unlock the benefits of adaptable talent.

Despite this influx, the US has a lower Talent Adaptability Score than we’d expect of such a mature market. Its sheer geographical size may provide a clue, given its long tradition of industrial agglomeration with the ‘Rust’ and ‘Corn’ belts as two striking examples.

Cultural and geographical quirks can also affect the adaptability of talent. In China, for example, workers have historically tended to stay with a single employer. This, and the country’s rapid growth, has so far cushioned China’s people from the need to be adaptable. It’s open to question whether this will continue.

Despite Germany’s impressive GDP, it records a relatively low Talent Adaptability Score and this requires a closer examination. An important factor is its specialised economy – Germany has a higher number of technical roles than any other country in the study – which essentially means that its workforce has bespoke (and therefore less transferable) skills. There are also cultural forces at play. German workers tend to demonstrate loyalty to their employer – few leave their post within three years and the average time spent with a company is 10 years. Together, this helps to explain why employees in Germany show the lowest industry switching rate and work for fewer employers compared with those in other countries in the study.

Germany’s specialised economy works well as long as its sectors are buoyant and stable, as they are today. But it also makes the country less able to respond to structural changes.

² According to the CIA World Factbook, Brazil, India and China saw estimated net migration of – 0.17, – 0.05 and – 0.33 per 1,000 of population, respectively in 2013 (www.cia.gov)





“It’s key that we find and retain people who are open to new experiences within the company, both from a function but also location point of view; we hire people with a long term career trajectory in mind.”

Jennifer Candee, Head of Global Talent Acquisition,
SABMiller plc

1. Adaptability could unlock up to USD130 billion in additional productivity

More efficient talent markets result in a measurable impact on economic performance. Put simply, markets with the most adaptable talent tend to be more efficient and productive.

We found a strong correlation between the adaptability of the talent in a particular country and the performance of its companies (see Figure 5).

Our research shows that companies operating in markets with highly adaptable talent can typically attract and retain people more effectively. This is shown by a higher first-time acceptance rate of candidates (indicating a more efficient recruitment process and a better fit between employer and employee), and a lower short-term resignation rate (those resigning their post within 12 months).

The number of new recruits who resign within a year of appointment is huge in some countries – with short-term resignation rates running at over 20% in China.³

There are some cultural influences to consider – workers in both Australia and Singapore, for example, tend to travel and work abroad more frequently than others – but generally, employees that fit well to their role and their employer tend to stay for longer.

Well-matched employees perform better, because they're more engaged and their skills and experience are well-suited to their role.

For organisations this amounts to a greater return on their investment in people measured here as Human Capital Return on Investment (HCROI). Our research suggests that up to USD130 billion of productivity could be released in the 11 markets we studied (including USD65.6 billion in China, USD29.3 billion in the US and USD11.7 billion in Brazil) if talent markets become more efficient.

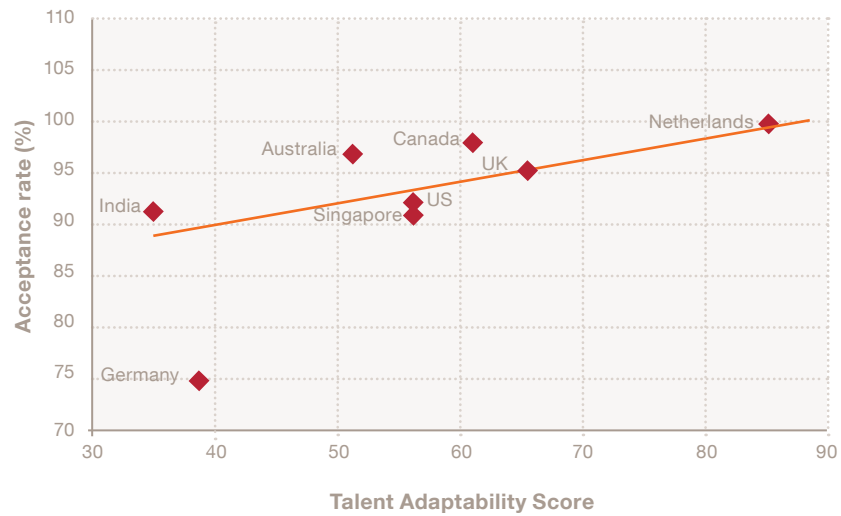
In markets with the most adaptable talent, people are free and willing to move to wherever their skills are best suited, including moving up through – or sideways within – an organisation. For this reason we include promotion rates and positions held as two of the indicators of adaptable talent.

Employers shouldn't overlook existing employees as there are benefits attached to promoting internally. These promotions are less costly and take less time to complete than external recruitment, but only if the candidates are the best fit for the job.

In the future, employers will rely on smart data analytics that will allow them to anticipate the future needs of their organisation as well as better understand its existing embedded skills. Equipped with this insight, their ability to invest in the right people management programmes to deliver against this need will provide a competitive advantage and will reduce avoidable workplace attrition.

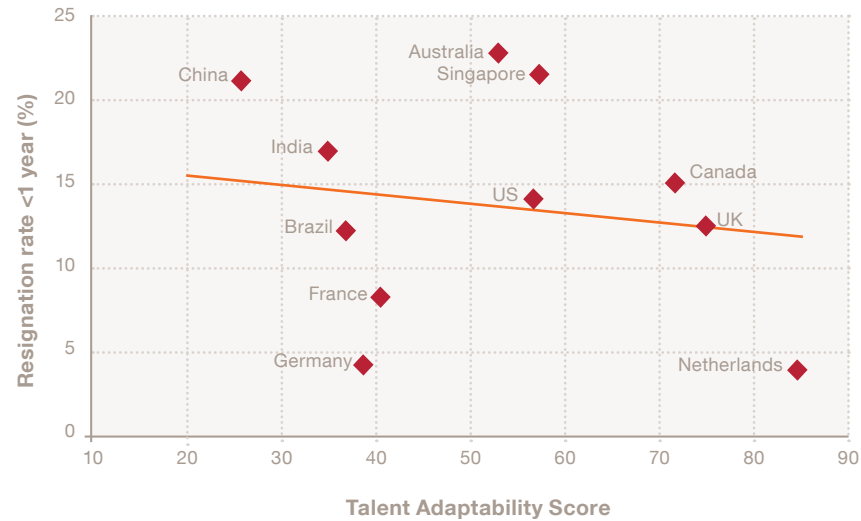
³ PwC Saratoga data

Figure 3: **Adaptability vs. Acceptance rate**



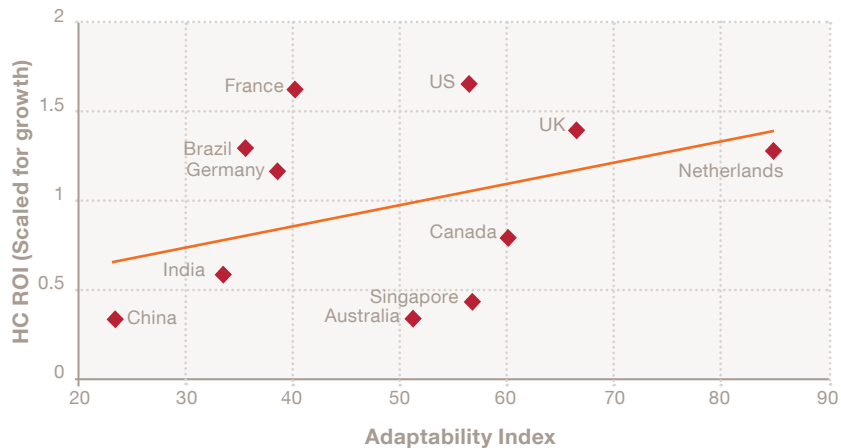
Sources: LinkedIn, PwC Saratoga Acceptance Rate: PwC Saratoga

Figure 4: **Adaptability vs. Short-term resignation rate**



Sources: LinkedIn, PwC Saratoga Resignation Rates: PwC Saratoga

Figure 5: **Adaptability vs. HCROI**



Sources: Adaptability: LinkedIn, PwC Saratoga HCROI: PwC Saratoga



Human capital return on investment (HCROI) describes the return an organisation receives for every dollar it spends on employees.

2. The skills gap will narrow with increased adaptability

The global economy is only now emerging from one of the deepest recessions in living memory.

As employers contemplate new levels of growth, the skills gap – their ability to find the right talent at the right time – will be the difference between recovery and prosperity.



of CEOs worry about the availability of key skills.

Source: : PwC 17th Annual Global CEO Survey

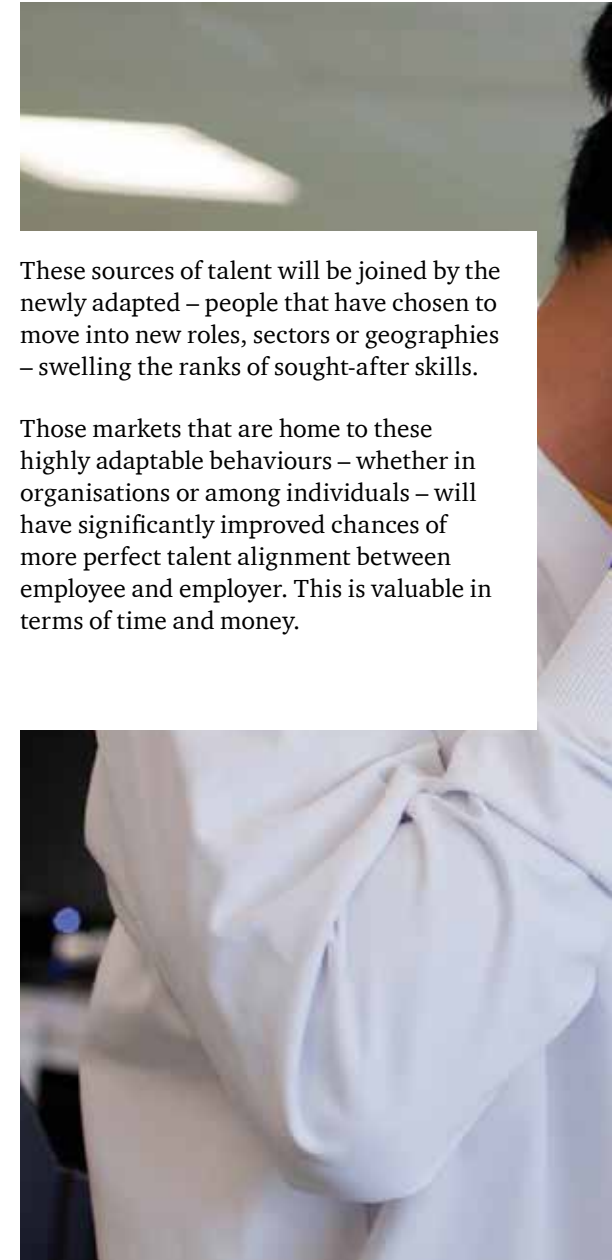
⁴ PwC's 17th Annual Global CEO survey – www.pwc.com/ceosurvey

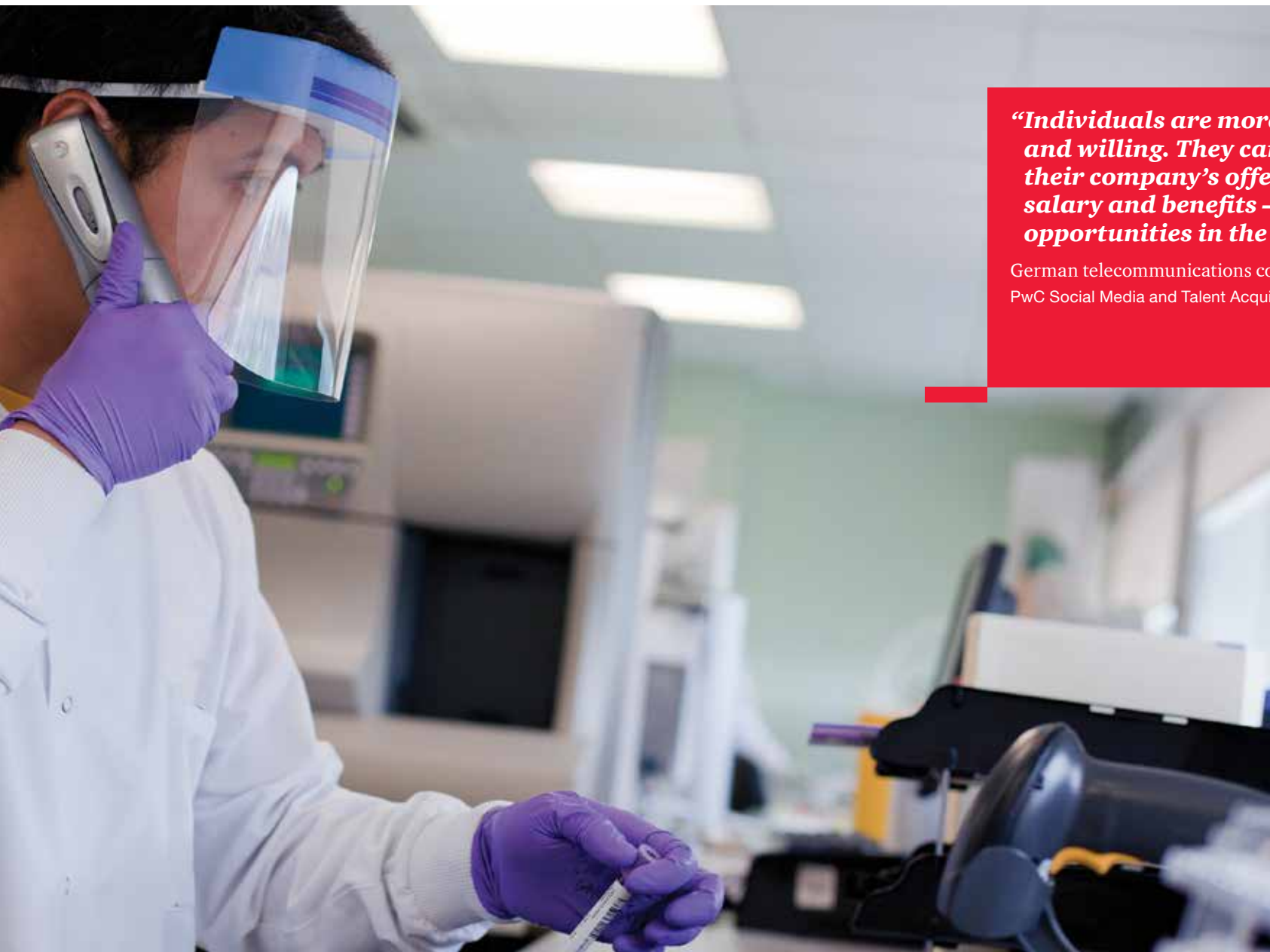
Sixty-three percent of CEOs worldwide say that availability of skills is a primary concern. This is an increase of 5% over the previous year with half of CEOs expecting to increase headcount in the coming 12 months (up from 45% in 2013)⁴.

Emerging markets in Asia are producing keen, well-educated graduates to compete with Western universities. And specialised skills demanded by the fast-growing tech sectors are clustering around geographic hotspots such as Tel Aviv, Singapore, Moscow and Santiago.

These sources of talent will be joined by the newly adapted – people that have chosen to move into new roles, sectors or geographies – swelling the ranks of sought-after skills.

Those markets that are home to these highly adaptable behaviours – whether in organisations or among individuals – will have significantly improved chances of more perfect talent alignment between employee and employer. This is valuable in terms of time and money.





“Individuals are more connected, open minded, and willing. They can easily consider whether their company’s offerings – challenges, salary and benefits – are comparable to other opportunities in the market.”

German telecommunications company

PwC Social Media and Talent Acquisition survey, January 2014

3. Compromising on talent costs the global economy

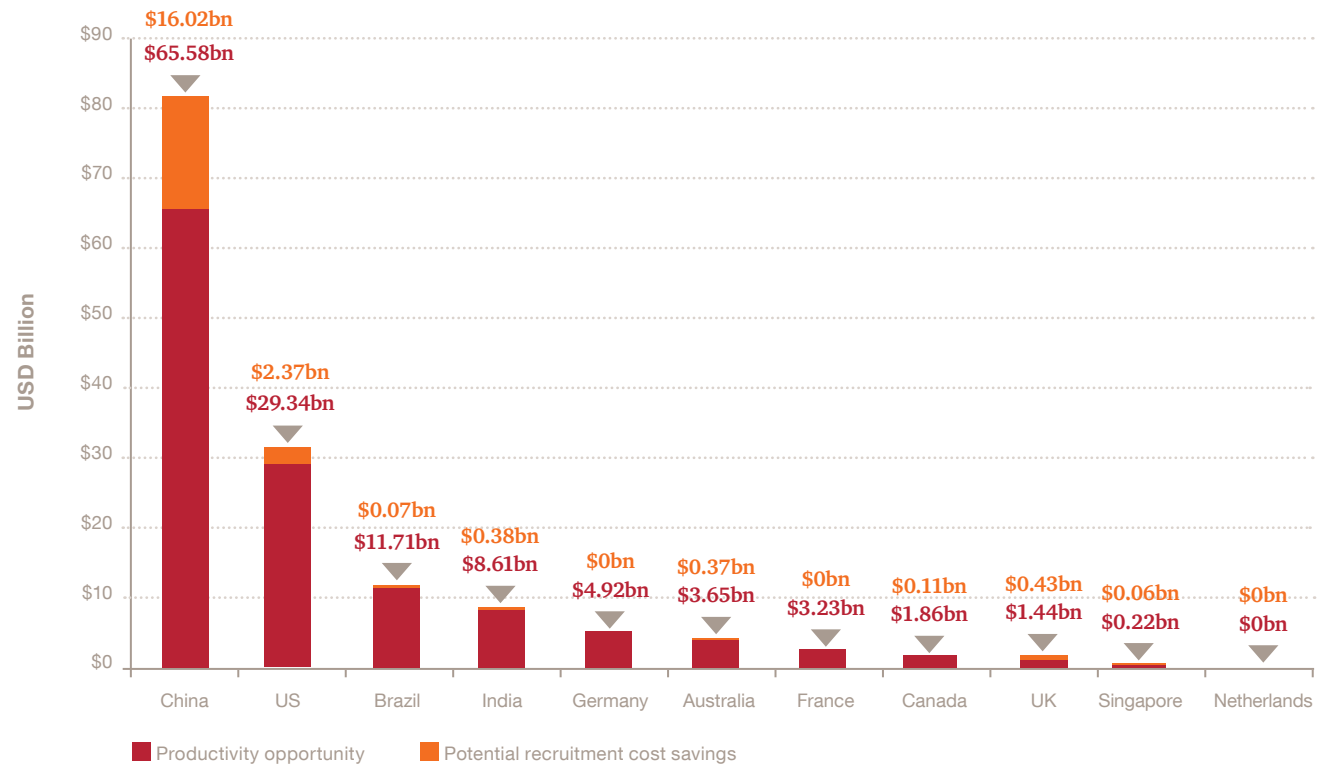
Employers operating in less adaptable markets face not only a potential loss of productivity, but also higher costs associated with the recruitment process.

A lack of choice compromises their talent search, resulting in the selection of a less-than-perfect candidate and higher short-term turnover. This results in significant recruitment costs in the form of more time-consuming recruitment and the expense of replacing candidates who don't stay with the company.

Our research suggests that the potential recruitment cost savings that could be gained through greater adaptability amounts to USD19.8 billion for the 11 countries in our survey including over USD16 billion in China.

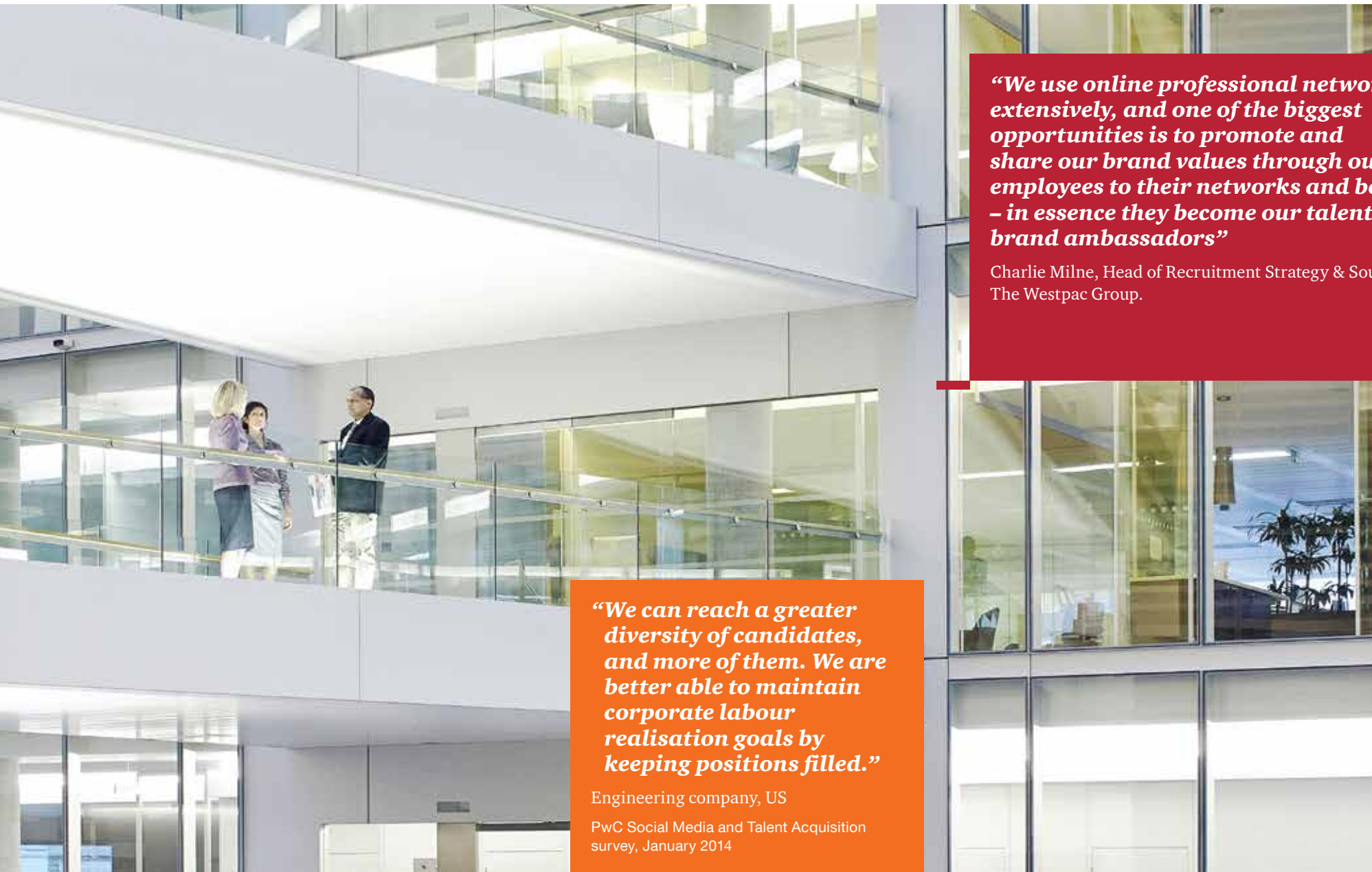
If you combine both the recruitment cost savings and the productivity opportunity that a more adaptable market and a more efficient recruitment process can deliver, a picture emerges of the potential savings that could be achieved⁵ in the countries we studied.

Figure 6: The adaptability upside: how the Netherlands' model could boost economies



Source: PwC Saratoga

⁵ Assuming a reduction in short-term resignations and increase in HCROI, based on adaptability index



“We use online professional networks extensively, and one of the biggest opportunities is to promote and share our brand values through our employees to their networks and beyond – in essence they become our talent brand ambassadors”

Charlie Milne, Head of Recruitment Strategy & Sourcing,
The Westpac Group.

“We can reach a greater diversity of candidates, and more of them. We are better able to maintain corporate labour realisation goals by keeping positions filled.”

Engineering company, US

PwC Social Media and Talent Acquisition
survey, January 2014

4. Visibility from online professional networks leads to better hiring

For an adaptable market to function efficiently it first requires visibility and then engagement between all participants – a marriage of flexible talent with opportunity.



of HRDs surveyed said online professional networks have improved their ability to fill vacancies more quickly and effectively

Source: : PwC Social Media and Talent Acquisition survey, January 2014

Many employers are tapping into online professional networks, such as LinkedIn, in an effort to access new talent pools that were previously out of reach.

Critically, this includes ‘passive’ as well as ‘active’ candidates – the fact that someone isn’t actively looking for a new job doesn’t now exclude them from consideration – and as a result, employers can tap into as many as four times the previous talent pool.

Similarly, talented people can explore well beyond their own borders and have access to far more information on potential employers. The result is more accurate choices on both sides of the talent equation; the creation of a more perfect labour market.



“After the advent of online professional networks, not only are we able to source talent faster but we are also able to get authentic feedback on the candidates, which helps organisations to find the right candidates in terms of cultural fit.”

Indian healthcare company

PwC Social Media and Talent Acquisition survey, January 2014

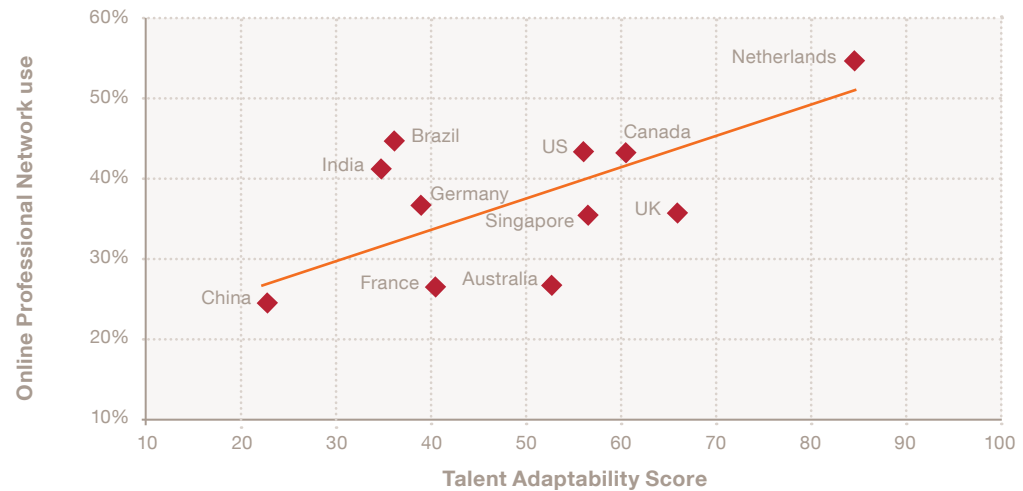
“These platforms have provided us with the ability to engage with more prospective candidates in cost effective and convenient ways, and do so more frequently. We now spend more time and effort on being where the candidates are, rather than expecting prospective candidates to come to us. We are able to start demonstrating and educating people about our company, careers and employer value proposition very early on in the process, which helps to attract the talent we are looking for and then influence them to move towards applying.”

US insurance company

PwC Social Media and Talent Acquisition survey, January 2014

We can see a strong correlation between the use of online professional networks in a particular market and its adaptability ranking:

Figure 7: Talent Adaptability Score vs Online Professional Network use



Sources: Online professional network use: LinkedIn

This helps to explain why the Netherlands has such a high Talent Adaptability Score. The fact that it's small but entrepreneurial by nature is an advantage, as is its multilingual but largely English-speaking population. It also has moderate levels of sector diversity and positive (although

modest) net migration. But most significantly, it's also embraced social media far more quickly and wholeheartedly than any country outside the US – it exhibits one of the highest uses of LinkedIn in the world and almost half of the working population has a professional online presence.⁶

⁶ LinkedIn data 2013

PwC Social Media and Talent Acquisition survey



of HR leaders said that social media and online professional networks have been positive for their business

The top benefits employers see from social media and online professional networks

- 1 More effective and efficient recruitment
- 2 Better internal sharing and networking
- 3 Creating better networks
- 4 A positive impact on their employer brand



of respondents say that they are using social recruitment tools

The top ways social recruitment tools help businesses engage with prospective candidates

- 1 More efficient targeting and communication
- 2 Transparency and pre-screening
- 3 Building relationships and engagement
- 4 Employer branding



say these tools have changed the way they engage with prospective candidates

PwC surveyed 144 HR leaders in 17 countries collectively employing over 2.7 million workers about their views and experience of using social media and online professional networks during December 2013 and January 2014.

Emerging trend: Job design

Over time, other benefits have overtaken cost-cutting as the main incentive for companies to use professional networks. The use of networks has already moved beyond pure recruitment to a more strategic level.



of HRDs surveyed said they're using networks to feed into job design and shape their future talent strategy.

“Online professional networks have not only helped us to reduce costs and speed up recruitment but enabled us to reach outside our 'traditional' networks to new pools of talent within other sectors and countries.”

Bridget Hutchinson Head of Resourcing and Employer Brand at Dixons Retail

Employers with a strong presence on online professional networks attract better people – and keep them.

The readiness of employees to use online professional networks means that candidates are able to make a far more informed choice about their career path. It's become easy to find out what a company is like to work for, the skills it looks for and positions it has available. As a result, employer branding including internet presence has become a critical component of the modern talent economy.

Our research shows that the stronger the employer brand and internet presence (measured here by LinkedIn's Talent Brand Index (TBI)), the more likely it is that an employer will attract the right candidate for them – resulting in a higher acceptance rate and a lower short-term resignation rate. Our research has shown a 1% increase in TBI can generate a 1.5% increase in acceptance rate, and a 1% decrease in short-term resignations.

The Talent Brand Index

LinkedIn measures internet presence through its Talent Brand Index (TBI) – a measure of how attractive an employer is to prospective candidates. The higher the score, the stronger the talent brand; the more attractive the employer, the easier it is to recruit the best.

The TBI is calculated by evaluating the awareness of its members of an employer (for example, by being connected with a member who works for it), against the employer's engagement with LinkedIn members (for example, by following the employer's company page).

“Technology has broken down so many barriers, we no longer need to be blinkered by where a candidate is based, the sector they work in or the university they went to. Forward thinking organisations are looking beyond traditional metrics to take into account individual behaviour, drive and cultural fit to make better informed, strategic hiring decisions.”

Lee Yeap, Head of Resourcing, British Sky Broadcasting





Organisations that enjoy a higher TBI enjoy a higher first offer acceptance rate – they are more attractive to potential recruits....

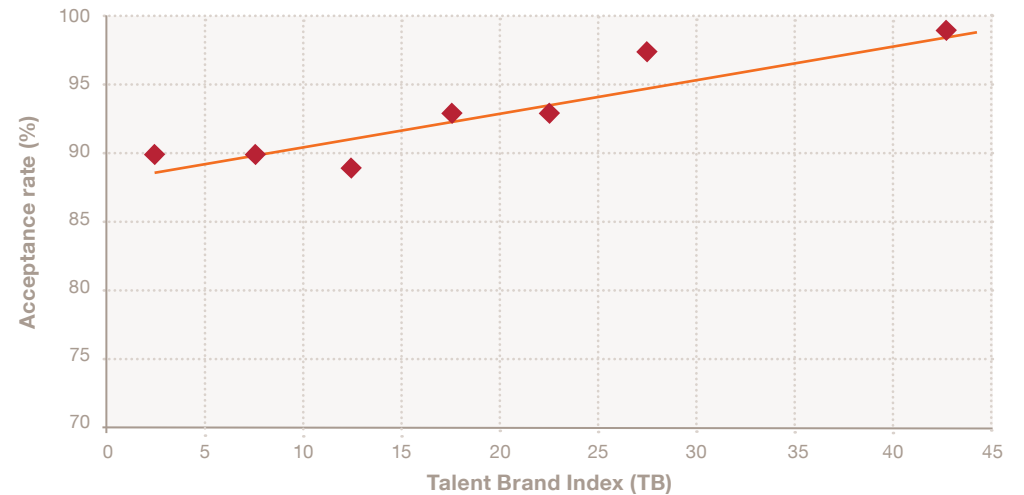
...and this extends to retention. A higher TBI correlates with a more accurate fit – recruits stay for longer.

“Brand experience is THE battleground and only true point of differentiation – delivering a consistent experience via YouTube, Pinterest, Facebook, Xing/LinkedIn etc is critical to building the brand in the eyes of your prospects.”

UK consulting firm

PwC Social Media and Talent Acquisition survey, January 2014

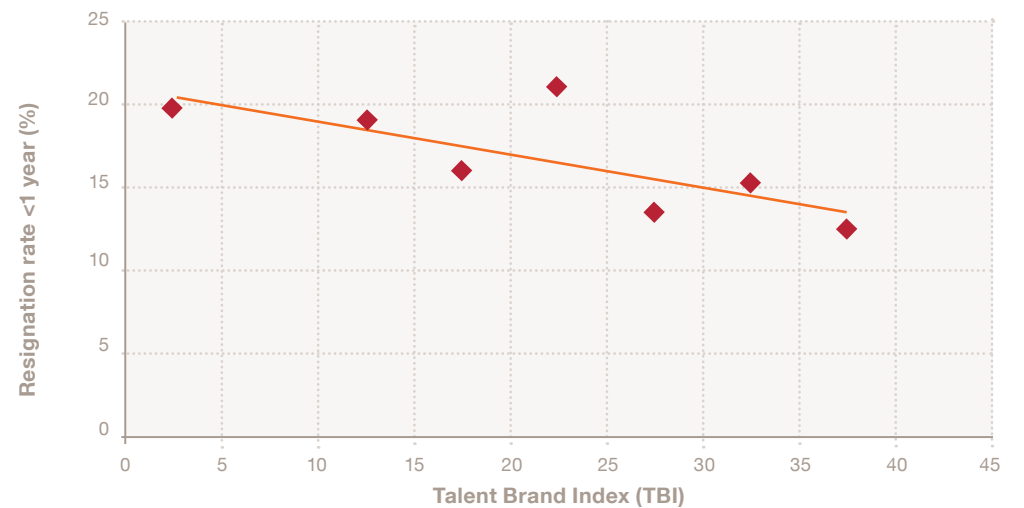
Figure 8: TBI vs. Acceptance rate



The data points in the above chart represent the average TBI and acceptance rates of clusters of organisations

Sources: TBI (LinkedIn), Acceptance rate (PwC Saratoga)

Figure 9: TBI vs. Short-term resignation rate



The data points in the above chart represent the average TBI and acceptance rates of clusters of organisations

Sources: TBI (LinkedIn), Resignation Rate (PwC Saratoga)

Recommendations for individuals

Future-proof your career

Individuals should take a longer term view of their careers. Seek out work environments that will help you to be more adaptable in the future. Remain open-minded about your career path and embrace change.

These aren't simply concerns for the young. People at 40 still need to plan for almost two-thirds of their working life – they need to be as adaptable today as they were on graduation – perhaps more so, given the divergence between the skills they nurtured in the 1980s and those sought now.

- **Look for evidence** – organisations are more transparent than ever. Find employers with a track record of training and development around soft and hard skills, and a corporate culture that embraces intelligent risk-taking by its employees.
- **Advertise your adaptability** – online professional networks have brought visibility to the talent market and allow people to showcase their talent as never before. Online professional networks are now the second most popular (as well as the fastest-growing) source of quality hires.⁷ The quality of your online presence has never mattered more.
- **Anticipate the skills need** – now and in the future. Transferable soft skills, such as languages, are valuable – 43% of the Millennial generation are already using a second language at work and a further 27% expect to do so in the future⁸ – but so too are hard skills. Keep them up to date through training and development and look for opportunities to pick up skills across departments in your company.
- **Be bold** – organisations will look for individuals who have a global mindset and are resilient, open to change, curious and proactive.
- **Go beyond borders** – career paths are no longer linear. The scenic route takes in more than the view. It allows you to absorb new skills, cultures and makes you more adaptable – and therefore desirable – to employers.
- **Connect, build and maintain your professional network** – identify and engage with people and organisations that can inspire or help you in your career today and in the future. Leverage your network to better understand the skills that are vital to learn now and over the next five years.
- **Invest in education** – employees who are willing to retrain themselves if it turns out certain skills are in demand (and their current skills aren't so much) will find better jobs. Invest in education also means staying on top of new tools and technology, and take courses to learn more about them.



Key questions for individuals:

- Are you thinking about your career options across borders and in other industries?
- Are you adequately investing in the skills you will need for the future?
- Do you have a presence on a professional network like LinkedIn, and is it strong and engaging enough to help you get where you want to be?
- Does your online profile showcase your adaptability – or seek to down-play it?

⁷ LinkedIn Global Recruitment Trends 2013

⁸ PwC's 'Millennials at work: Reshaping the workplace' report'



Recommendations for employers

Seek out, nurture and reward adaptable talent

Businesses have to adapt quickly to these emerging drivers. Strategic cycles are more compressed and interdependencies are more complex than at any other time.

Businesses need the ability to adapt to meet these emerging opportunities. And that requires adaptable people – many of whom are not in the right roles, the organisation or even in the same industry – yet.

Employers should focus on seven strategic imperatives which combined will help foster an adaptable culture and ensure good cultural fit:

- **Support those who dare to adapt** – define new boundaries, celebrate successes and learn from mistakes in a transparent way.
- **Use talent analytics to identify the skills that are central to the business strategy today and in the future** – challenge HR to prove its worth (and earn its seat at the boardroom table) by providing the insight that identifies ways to encourage adaptability, improves hiring and unlocks competitive advantage.
- **Balance hard and soft skills** – test for an absence of highly transferable attributes such as communication, problem-solving and collaboration skills. Recognise and nurture these attributes through tailored programmes such as coaching and mentoring, negotiation and conflict resolution training.
- **Recalibrate rewards** – traditional annual pay and performance management processes often fail to reward employees for being adaptable. Introduce ‘balanced scorecards’ that reflect the longer term needs of the business, not just the short-term shareholder value. For example, does the reward structure unintentionally penalise a sideways move or an overseas assignment, instead of recognising its longer term benefit?
- **Embed adaptability into your people management programmes** – make sure that analysis results in actions that efficiently encourage new and adaptable skills. Use the insights gained from data analytics to drive people programmes and inform learning and development.
- **Broaden and balance your recruitment strategies** – improve internal mobility – develop and nurture the people you already have – alongside external recruitment strategies that look wider and further for new talent.



Key questions for employers:

- Are you using the visibility that online professional networks bring to rethink the talent pipeline?
 - Are you rewarding – or penalising – adaptable talent in your organisation?
 - Is your HR function ready to support a focus on talent adaptability?
-
- **Maximise the benefits of online professional networks** – explore the pool of passive candidates who may have the skills you need, but who aren't actively looking for a job. Make sure that the organisation's online presence and employer brand are well-managed, vibrant and attractive.

Recommendations for educators

Offer courses and job training that produce adaptable people

Educators should work more closely with employers and governments to help meet future workforce needs. This will unlock long-term benefits for students, but it will require planning and collaboration.

Institutions must seek out employers and find ways to add value to their students in ways that supplement careers' advice. This already happens today in part, but it's patchy and uncoordinated, particularly among SMEs that are significant consumers of talent.

There are five key considerations for educators:

- **Promote and welcome business engagement in schools, colleges and universities** – inspire students in their future career choices and use business engagement to smooth the transition from education to the world of work, ensuring individuals receive high quality, objective advice and information on potential career paths.
- **Be responsive and agile** – the needs of both business and students will change over time. Maximise the chances of matching people to the opportunities available today and in the future by improving the brokering process. Use online professional networks to better track the skills in demand by employers now, and start conversations with potential students early about the training required to get them hired once their courses are complete.
- **Improve the dialogue with businesses** – develop a mindset that sees education as central to the success of businesses. Develop courses that are demand-led and supported by employers and engage with trade bodies to look over the horizon at future needs. Create programmes that include on-the-job training for early skills development.
- **Education for all** – as the implications of an ageing workforce are felt, educators can play a critical role in aiding adaptability by inspiring older people to retrain and adapt to changes in the workplace. Think about ways to make learning less daunting to people who have been outside classrooms for decades. Introduce bite-sized or distance learning programmes in partnership with employers to improve participation.
- **Blur the lines between education and employment** – move from a 'hard stop' mentality, which sees people 'leave behind' their education for work and instead maintain a dialogue with students beyond graduation. Use this 'after-sales service' philosophy to re-engage and upsell skills to deliver a longer term benefit.



Key questions for educators:

- How are you engaging with businesses to understand and meet their future talent needs?
- Are you using data analytics to help you predict future skill needs?
- Are you attracting employers and seeking their involvement in course design and delivery?
- Are you ready to help older learners re-skill and adapt for the future?

Recommendations for governments

Create the climate for adaptability

Governments should play an active role in shaping a national mindset that values, nurtures and rewards adaptability. They need to use the levers at their disposal, such as employment and immigration laws, as well as proactively shaping education and training systems.

PwC's recent CEO survey found that, although 41% felt that creating a skilled workforce should be a top priority for governments, just 21% believe that their government has been effective so far.⁹ There are five strategic levers that will improve adaptability and are within the reach of governments:

- **Enable and encourage labour mobility.** Mobility of labour across borders provides a greater opportunity for employers to find the right talent fit, and mobility depends on the right immigration policy. While there's a careful balance to be made in regions with net skills migration – policies that encourage mobility of scarce and valued skills, power economies.
- **Align education with the economic need.** Government should encourage an environment in schools, universities and career guidance services that focus on matching skills to prospective careers. Retraining for new skills and careers should be actively supported and shouldn't be left to individual institutions.
- **Work with business and take a data-led approach to skills policies.** A close collaboration between business and governments will help to identify current and potential future skills shortages in specific areas. Businesses need to get better at articulating their needs and data analytics can make these needs clearer and easier to act on. For example, the UK is experiencing a serious shortage of candidates with science, technology, engineering and mathematics (STEM) skills – 39% of UK employers say they are struggling to recruit employees with the advanced technical skills they need.¹⁰
- **Reskill the ageing workforce.** In the future we will all work longer, and as the global workforce ages and retirement ages increase, governments need to help older workers adapt. They need their contribution. In Europe, the working-age population will fall by 33 million by 2025 and Japan is currently losing 10,000 people¹¹ a week from its working-age workforce.



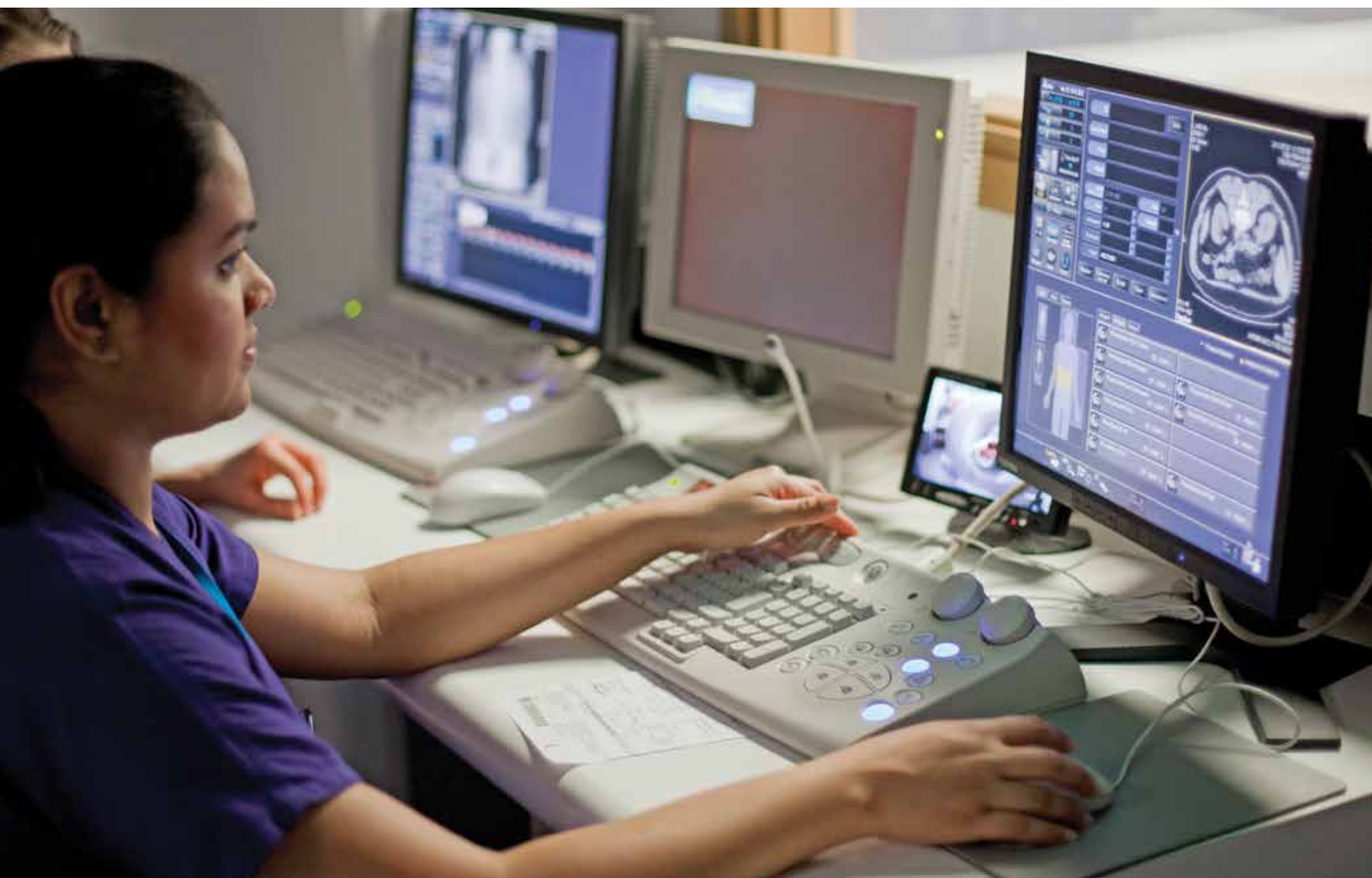
Key questions for governments:

- Will current education and skills policies encourage talent adaptability alongside development of skills currently in short supply?
 - Are policies supporting adaptability and retraining for older workers?
 - Is the government taking a lead in the debate about skills and immigration?
-
- **Lead the national dialogue about talent adaptability.** Legislation to foster a flexible labour infrastructure can only go so far – what's needed is for public leaders to actively encourage a national mindset that values, supports and nurtures adaptability. A public dialogue that involves public organisations, employers, universities and schools.

⁹ For a detailed analysis of CEOs' views on the relationship between government and business, see PwC's recent report *Government and the Global CEO: Fit for their futures*

¹⁰ Confederation of British Industry survey 2013

¹¹ UN Population Division, *World Population Prospects 2012*



Methodology

Talent Adaptability Scores

Using evidence from LinkedIn profiles and metrics from PwC Saratoga to assess each country in five areas:

The promotion rate (scaled to take account of growth in the home market) – which indicates the reward offered by employers as the value of talent increases.

The market vacancy rate – the lower the vacancy rate, the better the fit of talent to available jobs.

Average number of profile positions – the number of positions that professionals list on their LinkedIn profile, which is an indication of the liquidity within the given market.

Average number of employers – the average number of employers each individual has had, in any sector, which is a proxy for liquidity of opportunity.

The industry switching rate – the rate at which professionals switch between different sectors, which shows their willingness to apply their skills to different areas.

Method for overall ranking:

Each country is assigned a percentile ranking (on a scale of 0 – 100) for each of the five metrics included. The overall score is then calculated by averaging the percentile ranks across all five metrics. To achieve an overall score of 100 would require the country to be best performing in each metric, relative to the other countries.

Method for Talent Brand Index (TBI) correlations:

When correlating TBI with both Acceptance rate and Short-term resignation rate (page 19), we have grouped multiple companies together, and have displayed the average of these clusters on the charts in the main report as the data points for correlation.





Glossary

Acceptance rate

The number of job offers extended that were accepted by candidates

Cost per hire

External recruitment costs divided by the number of external **recruits**

Human capital return on investment (HCROI)

The return an organisation receives for every dollar it spends on employees

$$\frac{\text{Revenue} - (\text{Costs} - \text{Compensation and Benefits})}{\text{Compensation and Benefits}}$$

Millennial generation

Defined by PwC as those entering the workplace after June 2000

Promotion rate

The number of internal promotions as a percentage of headcount

Short-term resignation rate

The number of voluntary resignations within one year of the original date of appointment, excluding those taking early retirement or voluntary redundancy

Vacancy rate

The average number of open vacancies divided by the population studied (e.g. organisational headcount, working-age population).



+



=



=



Adaptable talent

Visibility

Better hiring

More value



Contacts

Key contacts

Michael Rendell

Human Resource consulting
Global Network Leader
+44 20 7212 4945
michael.g.rendell@uk.pwc.com

Jennifer Chapman

PwC Saratoga
+44 7795 452044
jennifer.s.chapman@uk.pwc.com

Peter De Bley

Global Human Resource
Management leader
+32 2 7104321
peter.de.bley@be.pwc.com

Charles Donkor

Global Talent Management leader
+41 58 792 4554
charles.donkor@ch.pwc.com

Australia

Jon Williams

+61 (2) 8266 2402
jon.williams@au.pwc.com

Brazil

Joao Lins

+55 11 3674 3536
joao.lins@br.pwc.com

Canada

Diane Horton

+1 416 687 8616
diane.j.horton@ca.pwc.com

China

Lukia Xing

+86 (10) 6533 7018
lukia.xing@cn.pwc.com

France

Daniel Giffard Bouvier

+33 (1) 56 57 84 99
daniel.giffard-bouvier@fr.pwc.com

Germany

Till Lohman

+49 40 6378-8835
till.r.lohmann@de.pwc.com

India

Padmaja Alaganandan

+91 80 4079 4001
padmaja.alaganandan@in.pwc.com

Netherlands

Henk van Cappelle

+31 88 792 63 53
henk.van.cappelle@nl.pwc.com

Singapore

Alywin S Teh

+ 65 6236 7268
alywin.teh@sg.pwc.com

UK

Laura Hinton

+44 (0) 20 7212 3531
laura.hinton@uk.pwc.com

US

Scott Olsen

+1 646 471 0651
scott.n.olsen@us.pwc.com

Ed Boswell

+1 704 350 8125
ed.boswell@us.pwc.com

Toni Cusumano

+1 415 307 7376
antonia.m.cusumano@us.pwc.com

www.pwc.com/hrconsulting

PwC helps organisations and individuals create the value they're looking for. We're a network of firms in 157 countries with more than 184,000 people who are committed to delivering quality in assurance, tax and advisory services. Tell us what matters to you and find out more by visiting us at www.pwc.com.

This publication has been prepared for general guidance on matters of interest only, and does not constitute professional advice. You should not act upon the information contained in this publication without obtaining specific professional advice. No representation or warranty (express or implied) is given as to the accuracy or completeness of the information contained in this publication, and, to the extent permitted by law, PwC does not accept or assume any liability, responsibility or duty of care for any consequences of you or anyone else acting, or refraining to act, in reliance on the information contained in this publication or for any decision based on it.

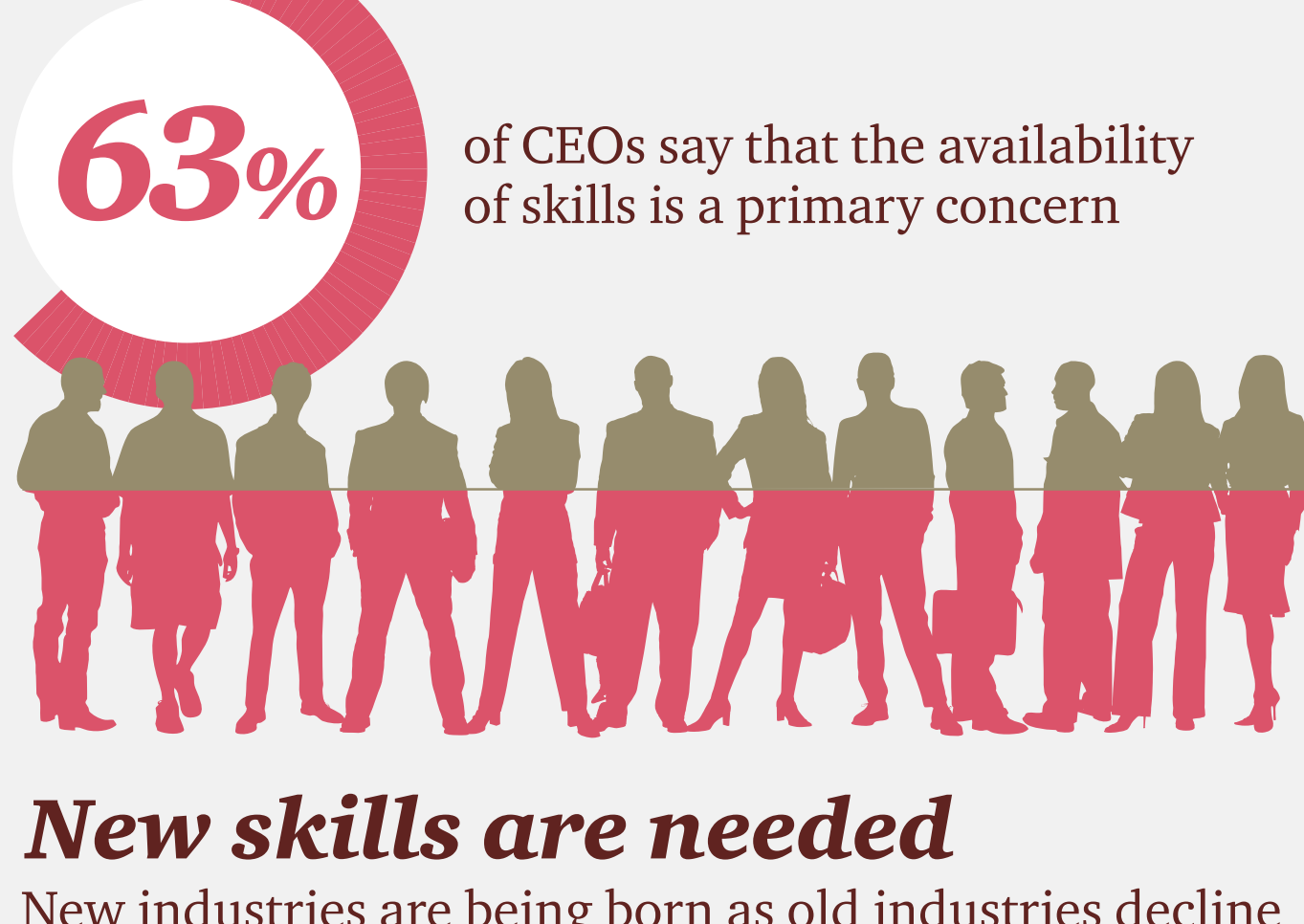
© 2014 PwC. All rights reserved. PwC refers to the PwC network and/or one or more of its member firms, each of which is a separate legal entity. Please see www.pwc.com/structure for further details.

Design Services 28522 (02/14).

Adapt to survive

The value of talent adaptability

Businesses worry about finding talent



New skills are needed

New industries are being born as old industries decline



A need for adaptability

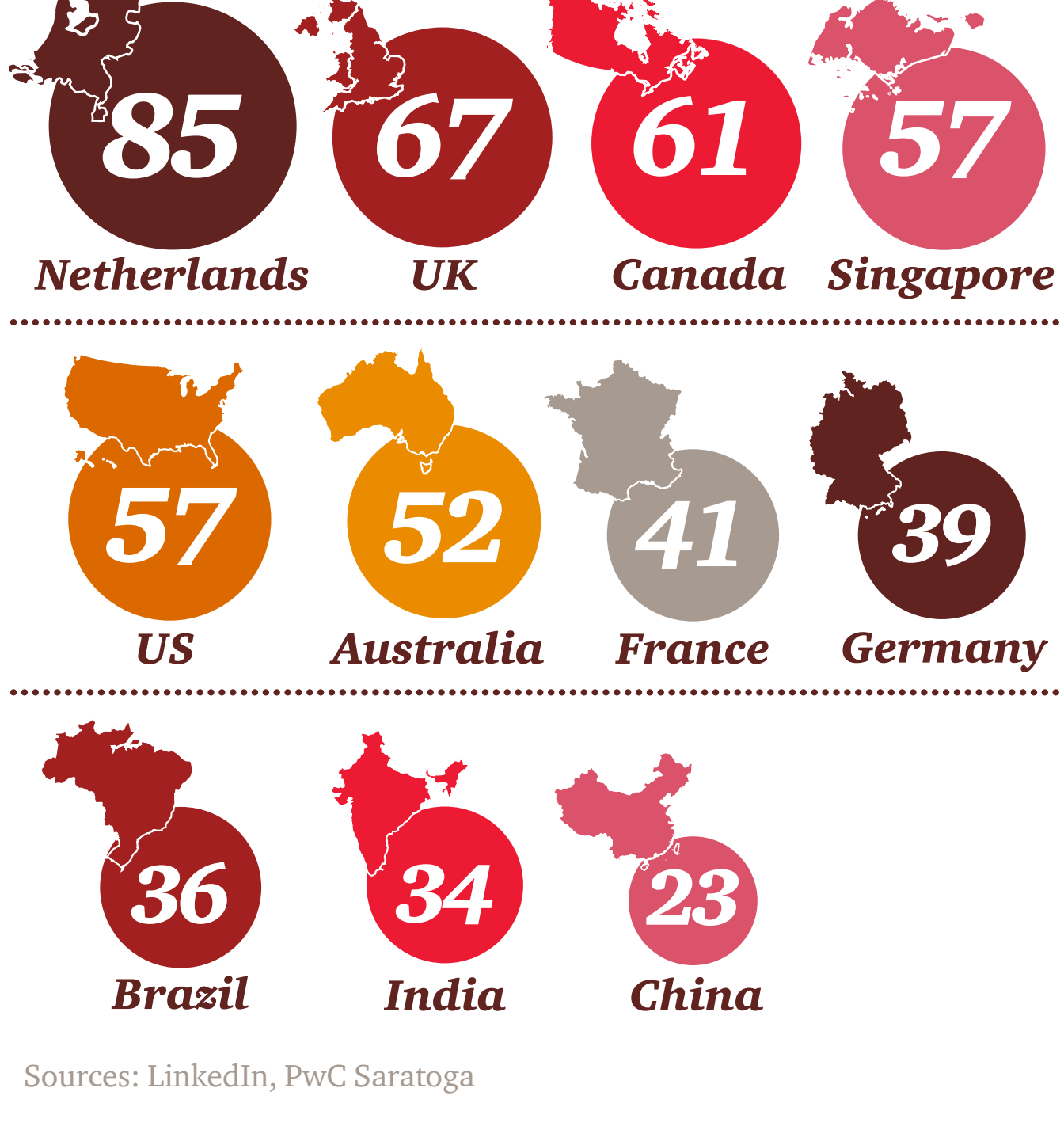
Talent adaptability: The willingness of people to change roles, employers, industries and develop skills...



...matched by the need and desire for employers to look differently at talent.

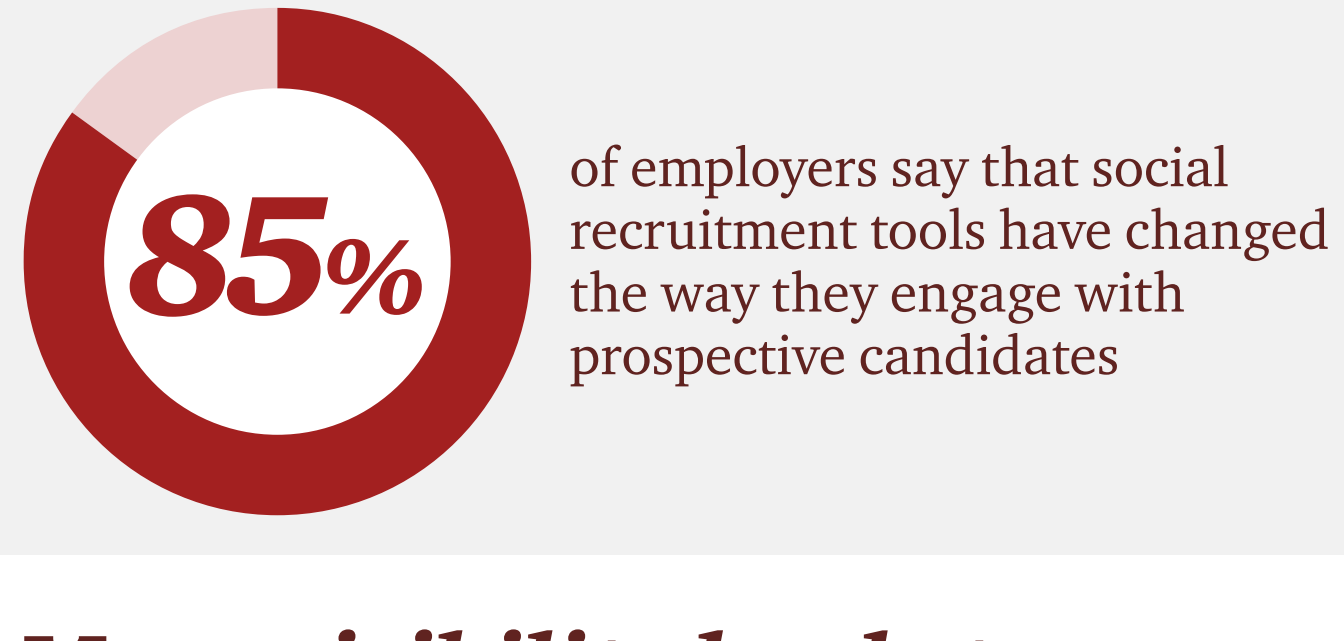
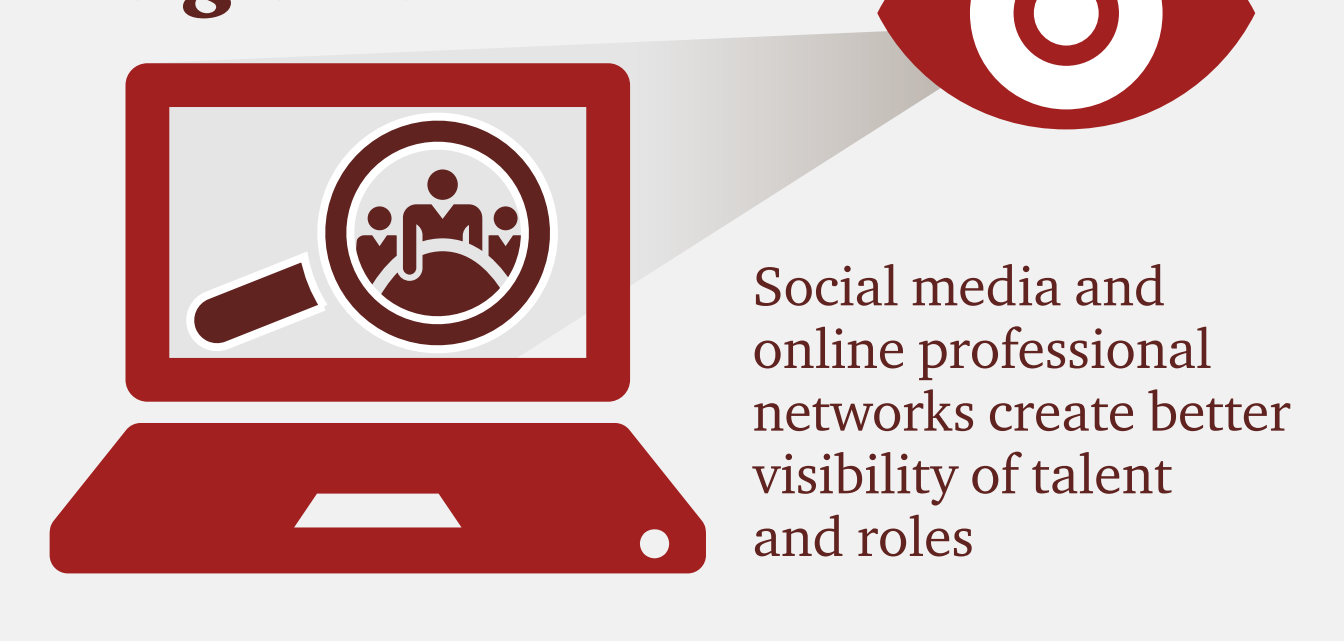
Some markets are more adaptable than others

Talent Adaptability Score



Sources: LinkedIn, PwC Saratoga

Social is changing the game



More visibility leads to a better talent fit

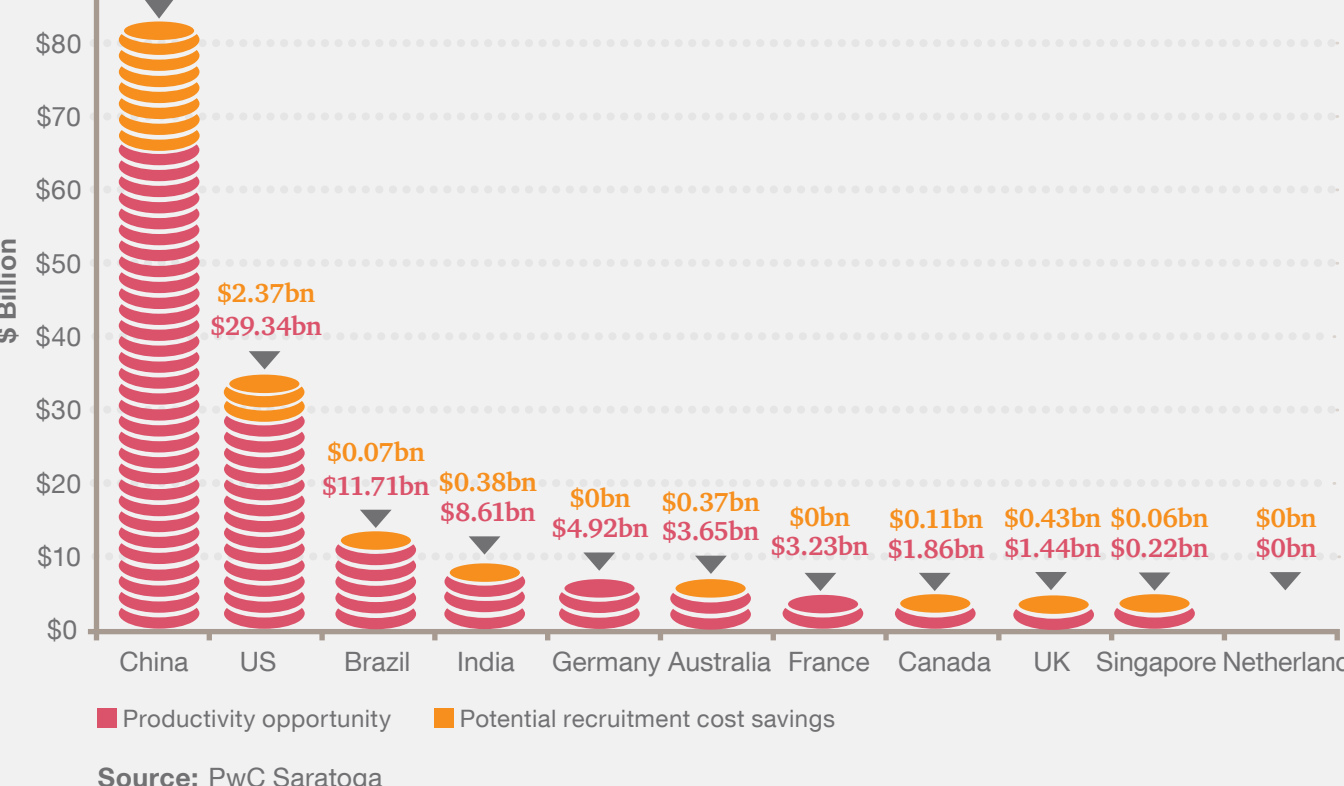


Talent adaptability unlocks value for employers, employees and national economies

Adaptability creates value from both recruitment cost savings and the productivity opportunity created by better talent fit.



The adaptability upside: The benefits that could be achieved if each country became as adaptable as the Netherlands:

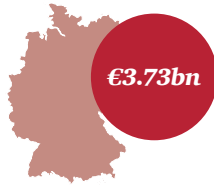


Source: PwC Saratoga

*Opportunity and potential savings relate to 11 countries in our study benchmarked against The Netherlands, the market with the highest Talent Adaptability Score

Adapt to survive

How better alignment between talent and opportunity can drive economic growth



Poor talent alignment is costing German companies as much as €3.73bn in lost productivity according to new research by PwC and LinkedIn.

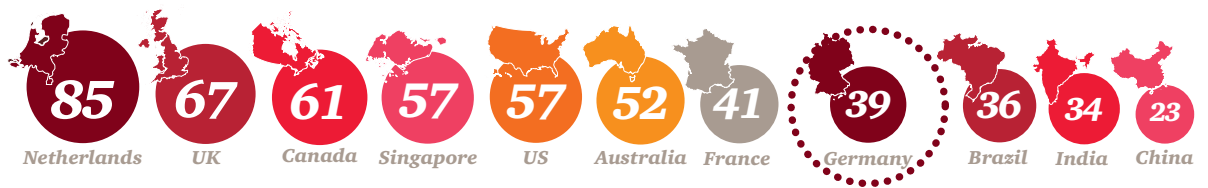
The report analyses the ability of labour markets to adapt to evolving demands, including the willingness of employees to adapt their skills to available opportunities and the ability of employers to find talent with the right skills for their needs. The result is a 'Talent Adaptability Score'¹ for each of the 11 countries studied.

The study brings together the two most comprehensive sources of talent data in the world; the real-time behaviours drawn from LinkedIn's 277 million members and employer information from PwC's Saratoga database of people and performance metrics, which covers more than 2,600 employers across the globe

In the most adaptable markets, productivity is higher because people and jobs are better matched. The research calculates the productivity gains that are available to countries if their talent market becomes as adaptable as the Netherlands.

¹ See our full report 'Adapt to survive: How better alignment between talent and opportunity can drive economic growth' – page 26 for details of research methodology

Talent Adaptability Score



Sources: LinkedIn, PwC Saratoga

Talent Adaptability Score

	Promotion Rates (Scaled for Growth) ¹	Vacancy Rate ²	Average number of profile positions ³	Average number of employers ³	Industry Switching Rate ³	Talent Adaptability Score
Netherlands	6.7% (2nd)	1.3% (5th)	4.5 (1st)	2.5 (2nd)	1.1% (1st)	85
United Kingdom	3.1% (4th)	1.7% (8th)	4.2 (4th)	2.4 (3rd)	0.7% (7th)	67
Canada	3.3% (3rd)	1.4% (6th)	4.0 (6th)	2.3 (7th)	0.8% (3rd)	61
Singapore	9.1% (1st)	1.6% (7th)	3.9 (7th)	2.4 (4th)	0.4% (11th)	57
United States	2.7% (5th)	2.7% (9th)	3.8 (8th)	2.3 (6th)	0.8% (5th)	57
Australia	0.9% (8th)	1.1% (4th)	4.5 (2nd)	2.5 (1st)	0.6% (8th)	52
France	2.9% (5th)*	0.9% (2nd)	4.0 (5th)	2.3 (5th)	0.6% (9th)	41
Germany	2.9% (5th)*	1.0% (3rd)	4.2 (3rd)	2.3 (8th)	0.5% (10th)	39
Brazil	2.9% (5th)*	1.3% (6th)*	3.4 (9th)	2.1 (10th)	0.8% (6th)	36
India	2.4% (6th)	1.3% (6th)*	2.7 (11th)	1.8 (11th)	1.0% (2nd)	34
China	2.3% (7th)	0.7% (1st)	3.4 (10th)	2.1 (9th)	0.8% (4th)	23

*Median figure for countries analysed; specific country data unavailable

¹ PwC Saratoga data 2013

² National Statistics offices for each country

³ LinkedIn data 2013

Key findings



Adaptability could unlock up to €98.3bn in additional productivity

Markets with the most adaptable talent are more efficient and productive – a better talent fit between employer and employee results in a greater return on an organisation's investment in people. Our study saw that being more adaptable was worth billions in productivity across the eleven markets studied. In Germany that productivity is worth €3.73bn to the economy.



Compromising on talent costs the global economy

In less adaptable talent markets poorly matched candidates drive up recruitment costs associated with hiring and on-boarding people. The hiring process takes longer and recruits don't stay. This creates a cost burden of €14.9bn in unnecessary recruitment costs for the 11 countries covered in this report.



The skills gap will narrow with increased adaptability

Worldwide unemployment continues to rise while jobs go unfilled. In Germany 58% of CEOs intend to increase their headcount over the next year but 47% are worried about the availability of key skills². As talented professionals become more adaptable, the skills gap will shrink, leading to better economic performance.

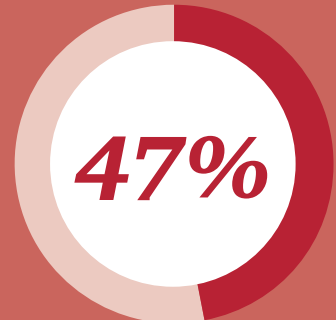


Visibility from online professional networks leads to better hiring

Online professional networks give organisations access to a larger talent pool and critically, to passive candidates as well as those actively looking for a job. This visibility works both ways and allows German workers to see the roles available and the skills needed to get them.



In Germany 58% of CEOs intend to increase their headcount over the next year.



of German CEOs are worried about the availability of key skills.²

² Findings from PwC's 17th Global CEO Survey – www.pwc.com/ceosurvey

Role of online professional networks in Germany

The report shows a strong correlation between the use of online professional networks in a particular market and its adaptability score. The Netherlands, the most adaptable country in our study, has embraced online professional networks far more quickly and wholeheartedly than any country outside the US – it exhibits one of the highest uses of LinkedIn in the world and almost half of the working population has a professional online presence.

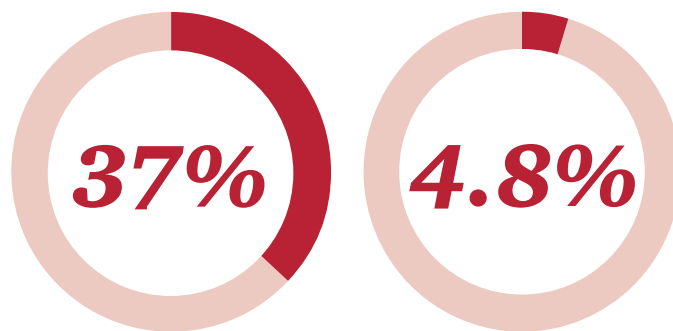
37% of German recruiters cite online professional networks as a top source of key quality hires, compared to 55% of Dutch recruiters³.

The global findings also show that employers with a strong online professional presence attract better people and keep them, in fact every 1% increase in Talent Brand Index⁴ can generate a 1.5% increase in acceptance rate, and a 1% decrease in short term resignations.⁵

Short-term resignation and first offer acceptance rates

The Netherlands also enjoys the lowest resignation rate of employees within their first year, with only 4.0% recruits leaving⁶ and the highest first-offer acceptance rate at 98%

Germany's also has a low short-term resignation rate(4.8%), but one of the lowest first offer acceptance rates at 74.6% - this highlights the opportunity for German businesses to find the right talent fit.



of German recruiters cite online professional networks as a top source of key quality hires, compared to 55% of Dutch recruiters.³

German's short-term (<12 months) resignation rate is over 4.8%.

³ LinkedIn Global Recruiting Trends 2013

⁴ LinkedIn measures internet presence through its Talent Brand Index (TBI) – a measure of how attractive an employer is to prospective candidates. For more information: <http://business.linkedin.com/talent-solutions/products/talent-brand-index.html>

⁵ See our full report 'Adapt to survive: How professionals, employers, governments and educators must prepare for the new economy' – page 26 for details of research methodology

⁶ PwC Saratoga data

A global study by PwC into the value gained by a better talent fit

Commissioned by LinkedIn



Our recommendations

Our recommendations are organised around four German stakeholder groups:



Individuals

Future proof your career

The age of the linear career is over. Individuals shouldn't be afraid to be bold and brave in their choices and take an open-minded and long-term view of their career. This means daring to look beyond geographic and sector borders for experience and learning, anticipating the skills that'll be in demand in the future and showcasing their adaptability. The rise of social media and an increasingly connected global workforce means it's never been easier for people to identify new opportunities, plan to develop the skills, and build a professional network that will allow them to transition into new roles.



Educators

Offer courses and job training that produce adaptable people

Closer collaboration and a two-way dialogue between educators and business will help to address skills gaps and anticipate the needs of employers. There shouldn't be a hard stop between the classroom and the workplace. Use online professional networks to better track the skills in demand by employers now, and start conversations with potential students early about the training required to get them hired once their courses are complete. Adaptability is relevant to all ages, so education and training that encourages adaptable skills should be available to all – particularly older people who will need to retrain through their longer careers as they adapt to multiple roles over their lifetime.



Employers

Seek out, nurture and reward adaptable talent

Businesses need adaptable people if they're to capitalise on new opportunities in fast-changing markets – people who can be found within the organisation, or elsewhere. Recruitment, learning and development, retention and reward processes should all be designed to encourage, nurture and support adaptability. Organisations should use talent analytics to identify the hard and soft skills that they will need and then train and hire strategically. Online professional networks have made it far easier to identify relevant candidates – both active and passive – who may have the skills they need.



Governments

Create a climate of adaptability

Governments must take a lead in the national debate about adaptability, as well as actively shaping a mindset that values and rewards it. Policies that encourage greater labour mobility have their part to play – and governments should balance local concerns with the benefits that flow from greater labour mobility. But it's also about aligning education with economic need. Governments need to take a strategic approach to skilling – and then reskilling – the workforce.

For further information see our global study at www.pwc.com/talentadaptability

Contact

Till Lohman

+49 40 6378-8835

till.r.lohmann@de.pwc.com

www.pwc.com/hrconsulting

PwC helps organisations and individuals create the value they're looking for. We're a network of firms in 157 countries with more than 184,000 people who are committed to delivering quality in assurance, tax and advisory services. Tell us what matters to you and find out more by visiting us at www.pwc.com.

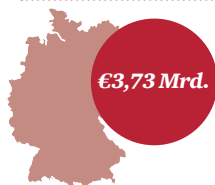
This publication has been prepared for general guidance on matters of interest only, and does not constitute professional advice. You should not act upon the information contained in this publication without obtaining specific professional advice. No representation or warranty (express or implied) is given as to the accuracy or completeness of the information contained in this publication, and, to the extent permitted by law, PwC does not accept or assume any liability, responsibility or duty of care for any consequences of you or anyone else acting, or refraining to act, in reliance on the information contained in this publication or for any decision based on it.

© 2014 PwC. All rights reserved. PwC refers to the PwC network and/or one or more of its member firms, each of which is a separate legal entity. Please see www.pwc.com/structure for further details.

Design Services 28522 (02/14).

Sich anpassen und überleben

Wie durch eine bessere Abstimmung zwischen Talenten und Möglichkeiten wirtschaftliches Wachstum gefördert werden kann



Durch unzureichende Talentausrichtungen entstehen deutschen Unternehmen nach kürzlichen Untersuchungen von PwC und LinkedIn Kosten in Höhe von bis zu €3,73 Mrd. an Produktivitätsverlusten.

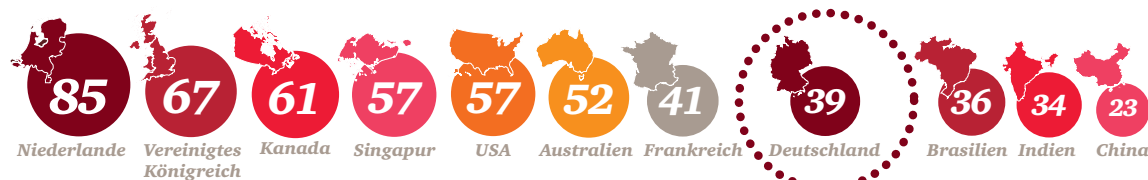
In dieser Studie werden die beiden umfangreichsten Datenquellen für Talente weltweit zusammengeführt: Das Realzeitverhalten der 277 Mio. Mitglieder von LinkedIn sowie Arbeitgeberinformationen aus der PwC Saratoga-Datenbank in Bezug auf Personen und Leistungsmessungen, die mehr als 2.600 Arbeitgeber weltweit abdeckt.

Der Bericht analysiert die Fähigkeit der Arbeitsmärkte, sich an Nachfrageänderungen anzupassen, wobei dazu auch die Bereitschaft der Mitarbeiter gehört, ihre Fähigkeiten und Kenntnisse an die jeweils verfügbaren Gelegenheiten und Möglichkeiten anzupassen, sowie die Fähigkeit der Arbeitgeber, Talente mit den jeweils notwendigen Fähigkeiten für ihren Bedarf zu finden. Im Ergebnis kristallisierte sich dabei ein Diagramm zur Talent-Anpassungsfähigkeit nach Punkten („Talent Adaptability Score“)¹ in jedem der 11 untersuchten Länder heraus.

In den Märkten mit der höchsten Anpassungsfähigkeit ist die Produktivität höher, da dort Arbeitsstellen und Beschäftigte besser zueinander passen. In der Untersuchung werden die Produktivitätszuwächse berechnet, die in Ländern erzielt werden, deren Talentmärkte genauso anpassungsfähig werden wie die der Niederlande.

¹ Lesen Sie hierzu unseren umfassenden Bericht „Sich anpassen, um zu überleben: Wie durch eine bessere Abstimmung zwischen Talenten und Möglichkeiten wirtschaftliches Wachstum gefördert werden kann“ – auf Seite 26 erfahren Sie Einzelheiten zur Untersuchungsmethodik

Talent-Anpassungsfähigkeit



Quelle: LinkedIn, PwC Saratoga

Talent-Anpassungsfähigkeit

	Beförderungssatz (nach Wachstum abgestuft)¹	Freie Stellen²	Durchschnittliche Anzahl profilierter Positionen³	Durchschnittliche Anzahl der Beschäftigten³	Industriewechsel³	Talent- Anpassungsfähigkeit (nach Punkten)
Niederlande	6,7 % (2 ^a)	1,3 % (5 ^a)	4,5 (1 ^a)	2,5 (2 ^a)	1,1 % (1 ^a)	85
Vereinigtes Königreich	3,1 % (4 ^a)	1,7 % (5 ^a)	4,2 (4 ^a)	2,4 (3 ^a)	0,7 % (7 ^a)	67
Kanada	3,3 % (3 ^a)	1,4 % (6 ^a)	4,0 (6 ^a)	2,3 (7 ^a)	0,8 % (3 ^a)	61
Singapur	9,1 % (1 ^a)	1,6 % (7 ^a)	3,9 (7 ^a)	2,4 (4 ^a)	0,4 % (11 ^a)	57
USA	2,7 % (5 ^a)	2,7 % (9 ^a)	3,8 (8 ^a)	2,3 (6 ^a)	0,8 % (5 ^a)	57
Australien	0,9 % (8 ^a)	1,1 % (4 ^a)	4,5 (2 ^a)	2,5 (1 ^a)	0,6 % (8 ^a)	52
Frankreich	2,9 % (5 ^a)	0,9 % (2 ^a)	4,0 (5 ^a)	2,3 (5 ^a)	0,6 % (9 ^a)	41
Deutschland	2,9 % (5 ^a)	1,0 % (3 ^a)	4,2 (3 ^a)	2,3 (8 ^a)	0,5 % (10 ^a)	39
Brasilien	2,9 % (5 ^a)	1,3 % (6 ^a)*	3,4 (9 ^a)	2,1 (10 ^a)	0,8 % (6 ^a)	36
Indien	2,4 % (6 ^a)	1,3 % (6 ^a)*	2,7 (11 ^a)	1,8 (11 ^a)	1,0 % (2 ^a)	34
China	2,3 % (7 ^a)	0,7 % (1 ^a)	3,4 (10 ^a)	2,1 (9 ^a)	0,8 % (4 ^a)	23

*Mittelwert für untersuchte Länder, spezifische Länderdaten lagen nicht vor

¹ PwC Saratoga-Daten 2013

² Nationale Statistikämter für jedes Land

³ LinkedIn-Daten 2013



A global study by PwC into the value gained by a better talent fit

Commissioned by LinkedIn

Schlüsselergebnisse



Durch Anpassungsfähigkeit könnten bis zu €98,3 Mrd. an zusätzlicher Produktivität freigesetzt werden

Märkte mit den anpassungsfähigsten Talenten sind effizienter und produktiver – durch eine bessere Talentabstimmung zwischen Arbeitgebern und Beschäftigten können höhere Erträge auf Unternehmensinvestitionen in Sachen Personal erzielt werden. Unsere Untersuchung zeigte, dass durch mehr Anpassungsfähigkeit Milliardenbeträge an Produktivität in allen elf Ländern, die wir untersuchten, erwirtschaftet werden konnten. In Deutschland beläuft sich dieser Produktivitätszuwachs für die Wirtschaft auf €3,73 Mrd.



Mit zunehmender Anpassungsfähigkeit werden die Fähigkeitslücken geringer

Weltweit nimmt die Arbeitslosigkeit zu, während gleichzeitig offene Stellen nicht besetzt werden können. In Deutschland beabsichtigen 58% aller CEOs (Geschäftsführer), die Anzahl ihrer Beschäftigten im nächsten Jahr zu erhöhen, jedoch machen sich 47% Sorgen, angesichts der dazu benötigten Fähigkeiten². Je anpassungsfähiger die mit den notwendigen Fähigkeiten ausgestatteten Berufsfachkräfte werden, umso mehr werden die Fähigkeitslücken zusammenschmelzen, was letztlich zu besseren wirtschaftlichen Leistungen führt.



Talenteinsparungen können die Weltwirtschaft teuer zu stehen kommen

Auf weniger anpassungsfähigen Talentmärkten können die Rekrutierungskosten aufgrund wenig geeigneter Stellenbewerber durch Anwerbungen und Einstellungen in die Höhe getrieben werden. Das Stellenbesetzungsverfahren dauert länger und die Bewerber bleiben nicht lange. Hierdurch entstehen in allen 11 Ländern dieser Untersuchung Kostenbelastungen von €14,9 Mrd. durch unnötige Rekrutierungsausgaben.

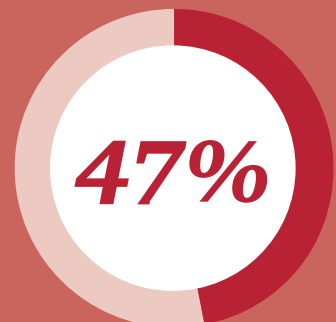


Visibilität durch berufliche Online-Netzwerke führt zu besseren Besetzungen

Durch berufliche Online-Netzwerke erhalten Unternehmen Zugang zu einem größeren Talentpool und in entscheidender Weise sowohl zu passiven Bewerbern als auch zu solchen, die aktiv nach einer neuen Stelle suchen. Diese Visibilität funktioniert auf zweierlei Arten und ermöglicht es Arbeitern in Deutschland, verfügbare Stellen einzusehen und gleichzeitig zu erkennen, welche Fähigkeiten notwendig sind, um diese zu erhalten.



In Deutschland beabsichtigen 58% aller CEOs (Geschäftsführer), die Anzahl ihrer Beschäftigten im nächsten Jahr zu erhöhen.



47% aller CEOs in Deutschland machen sich Sorgen angesichts der Verfügbarkeit von Schlüsselfähigkeiten.²

² Ergebnisse aus PwCs 17. weltweiter CEO-Umfrage (17th Global CEO Survey) – www.pwc.com/ceosurvey

Rolle beruflicher Online-Netzwerke in Deutschland

Der Bericht zeigt eine enge Beziehung zwischen der Verwendung beruflicher Online-Netzwerke in einem bestimmten Markt und seiner Anpassungsfähigkeit (nach Punkten). In den Niederlanden, dem anpassungsfähigsten Land unserer Studie, wurden fachberufliche Online-Netzwerke sehr viel schneller und umfassender angenommen als in irgendeinem anderen Land außerhalb der USA – es gehört zu den stärksten Benutzern von LinkedIn weltweit und fast die Hälfte der arbeitenden Bevölkerung verfügt über eine berufliche Online-Präsenz.

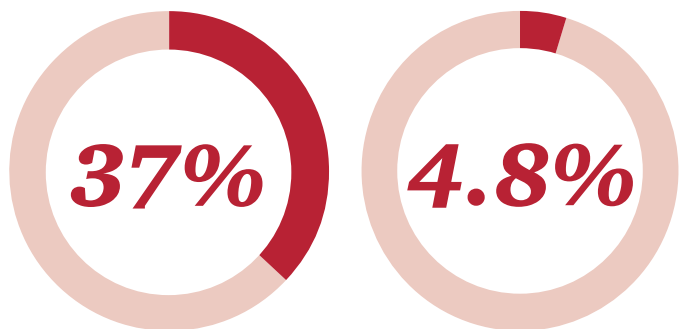
37% aller deutschen Rekrutierungs- und Stellenanbieter führen berufliche Online-Netzwerke als eine wichtige Quelle für erfolgreiche Stellenbesetzungen an, im Vergleich zu 55% der Rekrutierungs- und Stellenanbieter in den Niederlanden.

Aus globalen Ergebnissen geht außerdem hervor, dass Arbeitgeber mit einer starken beruflichen Online-Präsenz bessere Leute anziehen und auch halten. Tatsächlich kann durch einen Anstieg von jeweils 1% im Talent Brand Index ein Anstieg von 1,5% bei den Stellenannahmen und ein Rückgang von 1% bei kurzfristigen Kündigungen hervorgerufen werden.⁵

Kurzfristige Kündigungen und Annahmen von Erstangeboten

Die Niederlande haben darüber hinaus auch die niedrigste Anzahl von Mitarbeiterkündigungen im ersten Beschäftigungsjahr zu verzeichnen, wobei nur 4,0% aller Stellenbewerber ausscheiden, sowie die höchste Akzeptanz von Erstangeboten mit 98%.

Deutschland verfügt ebenfalls über eine niedrige kurzfristige Kündigungsrate (4,8%), jedoch gleichzeitig auch über eine der niedrigsten Annahmen von Erstangeboten von 74,6% - dies unterstreicht die Möglichkeit für deutsche Unternehmen, die richtigen Talentlösungen zu finden.



37% aller deutschen Rekrutierungs- und Stellenanbieter führen berufliche Online-Netzwerke als eine wichtige Quelle für erfolgreiche Stellenbesetzungen an, im Vergleich zu 55% der Rekrutierungs- und Stellenanbieter in den Niederlanden.³

Kurzfristige (< 12 Monate) Kündigungsrate in Deutschland liegt über 4,8%.

³ LinkedIn weltweite Rekrutierungstrends (Global Recruiting Trends) 2013

⁴ LinkedIn misst die Internet-Präsenz über seinen Talent Brand Index (TBI) – eine Messgröße dafür, wie attraktiv ein Arbeitgeber möglichen Stellenbewerbern erscheint. Weitere Informationen finden Sie unter: <http://business.linkedin.com/talent-solutions/products/talent-brand-index.html>

⁵ Lesen Sie hierzu auch unseren umfassenden Bericht „Sich anpassen, um zu überleben: Wie sich berufliche Fachkräfte, Arbeitgeber, Regierungen und Ausbilder auf die neue Wirtschaft vorbereiten sollten“ – auf Seite 26 erfahren Sie Einzelheiten zur Untersuchungsmethodik

⁶ PwC Saratoga-Daten

A global study by PwC into the value gained by a better talent fit

Commissioned by LinkedIn



Unsere Empfehlungen

Unsere Empfehlungen gelten für vier Interessengruppen in Deutschland:



Einzelpersonen

Machen Sie Ihre Berufslaufbahn zukunftsicher

Das Zeitalter der linearen Berufslaufbahn ist vorbei. Einzelpersonen sollten sich nicht davor scheuen, eine couragierte Wahl zu treffen und ihrer beruflichen Laufbahn offen und langfristig ins Auge zu sehen. Dies bedeutet auch, dass man über geografische Grenzen oder Industriesektoren hinaus Erfahrungsgrenzen und Lernmöglichkeiten wahrnimmt und dabei die Fähigkeiten voraussieht, die in Zukunft gefragt sein werden und seine Anpassungsfähigkeit unter Beweis stellt. Dank der Zunahme sozialer Medien und einem zunehmend vernetzten globalen Arbeitsmarkt ist es niemals einfacher gewesen, neue Möglichkeiten ausfindig zu machen, neue Fähigkeiten zu planen und zu entwickeln und ein berufliches Netzwerk aufzubauen, durch das es möglich wird, in neue Rollen hineinzuwachsen.



Arbeitgeber

Anpassungsfähige Talente finden, fördern und belohnen

Unternehmen brauchen anpassungsfähige Leute, falls sie neue Möglichkeiten in sich schnell ändernden Märkten gewinnbringend nutzen möchten – Leute, die intern aus dem Unternehmen oder von woanders her kommen. Stellenbesetzungen, Weiterbildung und Entwicklung, das Halten von Mitarbeitern sowie deren Auszeichnungsverfahren sollten insgesamt so ausgelegt sein, dass dadurch die Anpassungsfähigkeit der Mitarbeiter gefördert, ermutigt und unterstützt wird. Unternehmen sollten Talentanalysen durchführen, um festzustellen, welche fachlichen und sozialen Kompetenzen benötigt werden, um diese dann gezielt auszubilden oder anzuwerben. Berufliche Online-Netzwerke haben die Auffindung möglicher Kandidaten (sowohl aktiver als auch passiver) sehr viel einfacher gemacht, die möglicherweise über die benötigten Fähigkeiten verfügen.



Ausbilder

Seminare und berufliche Weiterbildung anbieten, aus denen anpassungsfähige Leute hervorgehen

Eine engere Zusammenarbeit und ein gegenseitiger Dialog zwischen Ausbildern und Unternehmen kann dabei helfen, Fähigkeitslücken anzusprechen und den Bedarf von Arbeitgebern vorzusehen. Zwischen Klassenzimmer und Arbeitsplatz sollte kein vollkommener Stillstand herrschen. Verwenden Sie berufliche Online-Netzwerke dazu, die Fähigkeiten zu verfolgen, die jetzt von Arbeitgebern verlangt werden, und beginnen Sie ein Gespräch mit potenziellen Studenten über die Schulungen, die nötig sind, um sie anstellen zu können, sobald ihre Studien abgeschlossen sind. Anpassungsfähigkeit ist für alle Altersgruppen wichtig, daher sollten Aus- und Weiterbildungen zur Förderung anpassungsfähiger Fertigkeiten auch allen zur Verfügung stehen – insbesondere älteren Leuten, die sich im Zuge ihrer längeren Berufslaufbahnen neue Fertigkeiten aneignen sollten, da sie sich im Laufe ihres Lebens mehrfach in neue Funktionen einarbeiten müssen.



Regierungen

Ein Klima der Anpassungsfähigkeit schaffen

Regierungen sollten sowohl eine Führungsrolle in der nationalen Debatte zur Anpassungsfähigkeit übernehmen, als auch aktiv eine Geisteshaltung mitgestalten, die dies zu schätzen weiß und belohnt. Eine Politik zur Förderung größerer Mobilität in der Arbeitswelt ist dabei sehr wichtig – und Regierungen sollten hierbei lokale Befürchtungen gegenüber den Vorteilen abwägen, die sich aus einer größeren Mobilität in der Arbeitswelt ergeben. Jedoch geht es hier auch darum, Ausbildung und wirtschaftlichen Bedarf aufeinander abzustimmen. Regierungen sollten gezielt auf die Ausbildung von Fertigkeiten bei ihren Arbeitskräften – und dann auf deren Umschulung – hinarbeiten.

Für weitere Informationen gehen Sie bitte zu unserer weltweiten Studie unter www.pwc.com/adaptability.

Kontakt

Till Lohman

+49 40 6378-8835

till.r.lohmann@de.pwc.com

www.pwc.com/hrconsulting

PwC helps organisations and individuals create the value they're looking for. We're a network of firms in 157 countries with more than 184,000 people who are committed to delivering quality in assurance, tax and advisory services. Tell us what matters to you and find out more by visiting us at www.pwc.com.

This publication has been prepared for general guidance on matters of interest only, and does not constitute professional advice. You should not act upon the information contained in this publication without obtaining specific professional advice. No representation or warranty (express or implied) is given as to the accuracy or completeness of the information contained in this publication, and, to the extent permitted by law, PwC does not accept or assume any liability, responsibility or duty of care for any consequences of you or anyone else acting, or refraining to act, in reliance on the information contained in this publication or for any decision based on it.

© 2014 PwC. All rights reserved. PwC refers to the PwC network and/or one or more of its member firms, each of which is a separate legal entity. Please see www.pwc.com/structure for further details.

Design Services 28522 (02/14).

Adapt to survive

How better alignment between talent and opportunity can drive economic growth



Poor talent alignment is costing UK companies as much as £930m in lost productivity according to new research by PwC and LinkedIn.

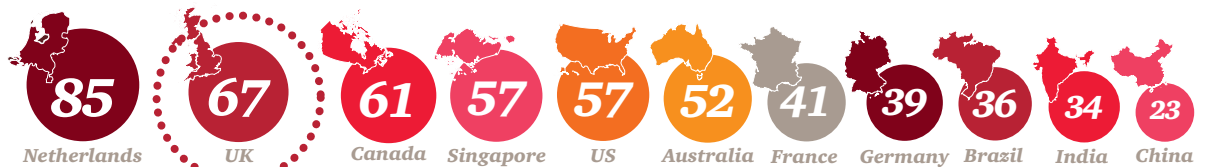
The study brings together the two most comprehensive sources of talent data in the world; the real-time behaviours drawn from LinkedIn's 277 million members and employer information from PwC's Saratoga database of people and performance metrics, which covers more than 2,600 employers across the globe

The report analyses the ability of labour markets to adapt to evolving demands, including the willingness of employees to adapt their skills to available opportunities and the ability of employers to find talent with the right skills for their needs. The result is a 'Talent Adaptability Score' for each of the 11 countries studied.

In the most adaptable markets, productivity is higher because people and jobs are better matched. The research calculates the productivity gains that are available to countries if their talent market becomes as adaptable as the Netherlands.

¹ See our full report 'Adapt to survive: How better alignment between talent and opportunity can drive economic growth' – page 26 for details of research methodology

Talent Adaptability Score



Sources: LinkedIn, PwC Saratoga

Talent Adaptability Score

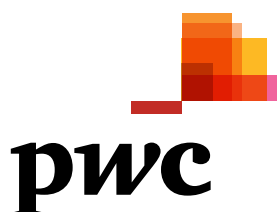
	Promotion Rates (Scaled for Growth) ¹	Vacancy Rate ²	Average number of profile positions ³	Average number of employers ³	Industry Switching Rate ³	Talent Adaptability Score
Netherlands	6.7% (2nd)	1.3% (5th)	4.5 (1st)	2.5 (2nd)	1.1% (1st)	85
United Kingdom	3.1% (4th)	1.7% (8th)	4.2 (4th)	2.4 (3rd)	0.7% (7th)	67
Canada	3.3% (3rd)	1.4% (6th)	4.0 (6th)	2.3 (7th)	0.8% (3rd)	61
Singapore	9.1% (1st)	1.6% (7th)	3.9 (7th)	2.4 (4th)	0.4% (11th)	57
United States	2.7% (5th)	2.7% (9th)	3.8 (8th)	2.3 (6th)	0.8% (5th)	57
Australia	0.9% (8th)	1.1% (4th)	4.5 (2nd)	2.5 (1st)	0.6% (8th)	52
France	2.9% (5th)*	0.9% (2nd)	4.0 (5th)	2.3 (5th)	0.6% (9th)	41
Germany	2.9% (5th)*	1.0% (3rd)	4.2 (3rd)	2.3 (8th)	0.5% (10th)	39
Brazil	2.9% (5th)*	1.3% (6th)*	3.4 (9th)	2.1 (10th)	0.8% (6th)	36
India	2.4% (6th)	1.3% (6th)*	2.7 (11th)	1.8 (11th)	1.0% (2nd)	34
China	2.3% (7th)	0.7% (1st)	3.4 (10th)	2.1 (9th)	0.8% (4th)	23

*Median figure for countries analysed; specific country data unavailable

¹ PwC Saratoga data 2013

² National Statistics offices for each country

³ LinkedIn data 2013



A global study by PwC into the value gained by a better talent fit

Commissioned by LinkedIn

Key findings



Adaptability could unlock up to £83.5bn in additional productivity

Markets with the most adaptable talent are more efficient and productive – a better talent fit between employer and employee results in a greater return on an organisation's investment in people. Our study saw that being more adaptable was worth billions in productivity across the eleven markets studied. In the UK that productivity is worth £930m to the economy.



Compromising on talent costs the UK economy

In less adaptable talent markets poorly matched candidates drive up recruitment costs associated with hiring and on-boarding people. The hiring process takes longer and recruits don't stay. This creates a cost burden of £270m a year for the UK in unnecessary recruitment costs and £12.7bn in the 11 countries covered in this report



The skills gap will narrow with increased adaptability

Worldwide unemployment continues to rise while jobs go unfilled. In the UK 65% of CEOs intend to increase their headcount over the next year but 64% are worried about the availability of key skills. As talented professionals become more adaptable, the skills gap will shrink, leading to better economic performance.

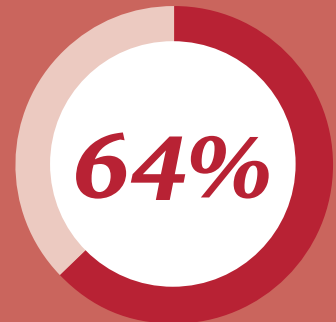


Visibility from online professional networks leads to better hiring

Online professional networks give organisations access to a larger talent pool and critically, to passive candidates as well as those actively looking for a job. This visibility works both ways and allows UK workers to see the roles available and the skills needed to get them.



In the UK 65% of CEOs intend to increase their headcount over the next year.



of UK CEOs are worried about the availability of key skills.²



A cost burden to the UK in unnecessary recruitment costs.

² Findings from PwC's 17th Global CEO Survey – www.pwc.com/ceosurvey

Role of online professional networks in the UK

The report shows a strong correlation between the use of online professional networks in a particular market and its adaptability score. The Netherlands, the most adaptable country in our study, has embraced online professional networks far more quickly and wholeheartedly than any country outside the US – it exhibits one of the highest uses of LinkedIn in the world and almost half of the working population has a professional online presence.

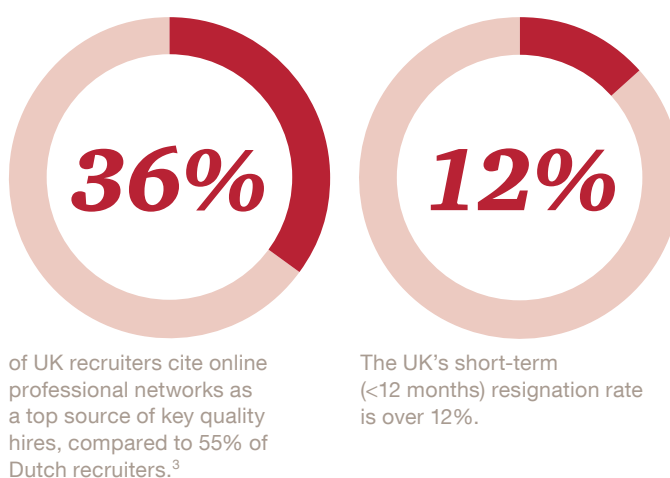
36% of UK recruiters cite online professional networks as a top source of key quality hires, compared to 55% of Dutch recruiters.³

The global findings also show that employers with a strong online professional presence attract better people and keep them, in fact every 1% increase in Talent Brand Index⁴ can generate a 1.5% increase in acceptance rate, and a 1% decrease in short term resignations.⁵

Short-term resignation rates

The Netherlands also enjoys the lowest resignation rate of employees within their first year, with only 4% recruits leaving.⁶

When compared with the UK's short-term resignation rate of over 12%, this further highlights the opportunity for the UK to get the right talent fit.



³ LinkedIn Global Recruiting Trends 2013

⁴ LinkedIn measures internet presence through its Talent Brand Index (TBI) – a measure of how attractive an employer is to prospective candidates. For more information: <http://business.linkedin.com/talent-solutions/products/talent-brand-index.html>

⁵ See our full report 'Adapt to survive: How professionals, employers, governments and educators must prepare for the new economy' – page 26 for details of research methodology

⁶ PwC Saratoga data

A global study by PwC into the value gained by a better talent fit

Commissioned by LinkedIn



Our recommendations

Our recommendations are organised around four UK stakeholder groups:



Individuals

Future proof your career

The age of the linear career is over. Individuals shouldn't be afraid to be bold and brave in their choices and take an open-minded and long-term view of their career. This means daring to look beyond geographic and sector borders for experience and learning, anticipating the skills that'll be in demand in the future and showcasing their adaptability. The rise of social media and an increasingly connected global workforce means it's never been easier for people to identify new opportunities, plan to develop the skills, and build a professional network that will allow them to transition into new roles.



Educators

Offer courses and job training that produce adaptable people

Closer collaboration and a two-way dialogue between educators and business will help to address skills gaps and anticipate the needs of employers. There shouldn't be a hard stop between the classroom and the workplace. Use online professional networks to better track the skills in demand by employers now, and start conversations with potential students early about the training required to get them hired once their courses are complete. Adaptability is relevant to all ages, so education and training that encourages adaptable skills should be available to all – particularly older people who will need to retrain through their longer careers as they adapt to multiple roles over their lifetime.



Employers

Seek out, nurture and reward adaptable talent

Businesses need adaptable people if they're to capitalise on new opportunities in fast-changing markets – people who can be found within the organisation, or elsewhere. Recruitment, learning and development, retention and reward processes should all be designed to encourage, nurture and support adaptability. Organisations should use talent analytics to identify the hard and soft skills that they will need and then train and hire strategically. Online professional networks have made it far easier to identify relevant candidates – both active and passive – who may have the skills they need.



Governments

Create a climate of adaptability

Governments must take a lead in the national debate about adaptability, as well as actively shaping a mindset that values and rewards it. Policies that encourage greater labour mobility have their part to play – and governments should balance local concerns with the benefits that flow from greater labour mobility. But it's also about aligning education with economic need. Governments need to take a strategic approach to skilling – and then reskilling – the workforce.

For further information see our global study at www.pwc.com/talentadaptability

Contact

Laura Hinton

+44 (0) 20 7212 3531

laura.hinton@uk.pwc.com

www.pwc.com/hrconsulting

PwC helps organisations and individuals create the value they're looking for. We're a network of firms in 157 countries with more than 184,000 people who are committed to delivering quality in assurance, tax and advisory services. Tell us what matters to you and find out more by visiting us at www.pwc.com.

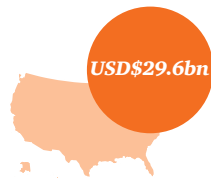
This publication has been prepared for general guidance on matters of interest only, and does not constitute professional advice. You should not act upon the information contained in this publication without obtaining specific professional advice. No representation or warranty (express or implied) is given as to the accuracy or completeness of the information contained in this publication, and, to the extent permitted by law, PwC does not accept or assume any liability, responsibility or duty of care for any consequences of you or anyone else acting, or refraining to act, in reliance on the information contained in this publication or for any decision based on it.

© 2014 PwC. All rights reserved. PwC refers to the PwC network and/or one or more of its member firms, each of which is a separate legal entity. Please see www.pwc.com/structure for further details.

Design Services 28522 (02/14).

Adapt to survive

How better alignment between talent and opportunity can drive economic growth



Poor talent alignment is costing US companies as much as USD\$29.6bn in lost productivity according to new research by PwC and LinkedIn.

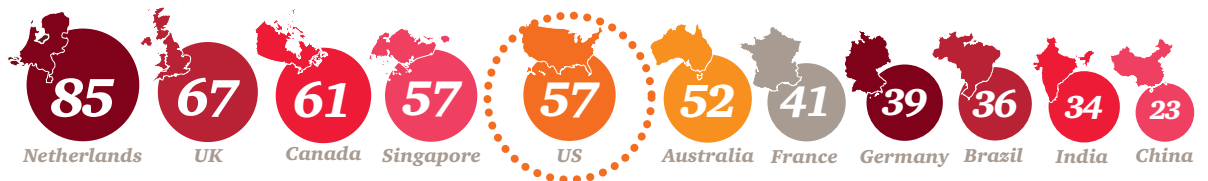
The report analyses the ability of labour markets to adapt to evolving demands, including the willingness of employees to adapt their skills to available opportunities and the ability of employers to find talent with the right skills for their needs. The result is a 'Talent Adaptability Score'¹ for each of the 11 countries studied.

The study brings together the two most comprehensive sources of talent data in the world; the real-time behaviours drawn from LinkedIn's 277 million members and employer information from PwC's Saratoga database of people and performance metrics, which covers more than 2,600 employers across the globe

In the most adaptable markets, productivity is higher because people and jobs are better matched. The research calculates the productivity gains that are available to countries if their talent market becomes as adaptable as the Netherlands.

¹ See our full report 'Adapt to survive: How better alignment between talent and opportunity can drive economic growth' – page 26 for details of research methodology

Talent Adaptability Score



Talent Adaptability Score

	Promotion Rates (Scaled for Growth) ¹	Vacancy Rate ²	Average number of profile positions ³	Average number of employers ³	Industry Switching Rate ³	Talent Adaptability Score
Netherlands	6.7% (2nd)	1.3% (5th)	4.5 (1st)	2.5 (2nd)	1.1% (1st)	85
United Kingdom	3.1% (4th)	1.7% (8th)	4.2 (4th)	2.4 (3rd)	0.7% (7th)	67
Canada	3.3% (3rd)	1.4% (6th)	4.0 (6th)	2.3 (7th)	0.8% (3rd)	61
Singapore	9.1% (1st)	1.6% (7th)	3.9 (7th)	2.4 (4th)	0.4% (11th)	57
United States	2.7% (5th)	2.7% (9th)	3.8 (8th)	2.3 (6th)	0.8% (5th)	57
Australia	0.9% (8th)	1.1% (4th)	4.5 (2nd)	2.5 (1st)	0.6% (8th)	52
France	2.9% (5th)*	0.9% (2nd)	4.0 (5th)	2.3 (5th)	0.6% (9th)	41
Germany	2.9% (5th)*	1.0% (3rd)	4.2 (3rd)	2.3 (8th)	0.5% (10th)	39
Brazil	2.9% (5th)*	1.3% (6th)*	3.4 (9th)	2.1 (10th)	0.8% (6th)	36
India	2.4% (6th)	1.3% (6th)*	2.7 (11th)	1.8 (11th)	1.0% (2nd)	34
China	2.3% (7th)	0.7% (1st)	3.4 (10th)	2.1 (9th)	0.8% (4th)	23

*Median figure for countries analysed; specific country data unavailable

¹ PwC Saratoga data 2013

² National Statistics offices for each country

³ LinkedIn data 2013



A global study by PwC into the value gained by a better talent fit

Commissioned by LinkedIn

Key findings



Adaptability could unlock up to USD\$130bn in additional productivity

Markets with the most adaptable talent are more efficient and productive – a better talent fit between employer and employee results in a greater return on an organisation's investment in people. Our study saw that being more adaptable was worth billions in productivity across the eleven markets studied. In US that productivity is worth USD\$29.6bn to the economy.



Compromising on talent costs the US economy

In less adaptable talent markets poorly matched candidates drive up recruitment costs associated with hiring and on-boarding people. The hiring process takes longer and recruits don't stay. This creates a cost burden of USD\$2.4bn a year for the US in unnecessary recruitment costs and USD\$19.9bn in the 11 countries covered in this report



The skills gap will narrow with increased adaptability

Worldwide unemployment continues to rise while jobs go unfilled. In the US 62% of CEOs intend to increase their headcount over the next year but 70% are worried about the availability of key skills. As talented professionals become more adaptable, the skills gap will shrink, leading to better economic performance.



Visibility from online professional networks leads to better hiring

Online professional networks give organisations access to a larger talent pool and critically, to passive candidates as well as those actively looking for a job. This visibility works both ways and allows US workers to see the roles available and the skills needed to get them.



In the US 62% of CEOs intend to increase their headcount over the next year.



of US CEOs are worried about the availability of key skills.²



A cost burden to the US in unnecessary recruitment costs.

² Findings from PwC's 17th Global CEO Survey – www.pwc.com/ceosurvey

Role of online professional networks in the US

The report shows a strong correlation between the use of online professional networks in a particular market and its adaptability score. The Netherlands, the most adaptable country in our study, has embraced online professional networks far more quickly and wholeheartedly than any country outside the US – it exhibits one of the highest uses of LinkedIn in the world and almost half of the working population has a professional online presence.

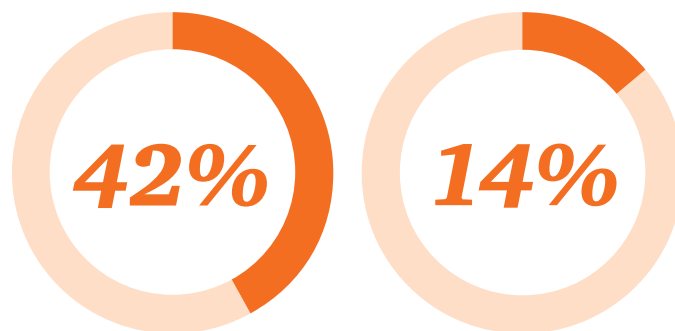
42% of US recruiters cite online professional networks as a top source of key quality hires, compared to 55% of Dutch recruiters.³

The global findings also show that employers with a strong online professional presence attract better people and keep them, in fact every 1% increase in Talent Brand Index⁴ can generate a 1.5% increase in acceptance rate, and a 1% decrease in short term resignations.⁵

Short-term resignation rates

The Netherlands also enjoys the lowest resignation rate of employees within their first year, with only 4% recruits leaving.⁶

When compared with the US short-term resignation rate of over 14%, this further highlights the opportunity for the US to get the right talent fit.



of US recruiters cite online professional networks as a top source of key quality hires, compared to 55% of Dutch recruiters.³

The US's short-term (<12 months) resignation rate is over 14%.

³ LinkedIn Global Recruiting Trends 2013

⁴ LinkedIn measures internet presence through its Talent Brand Index (TBI) – a measure of how attractive an employer is to prospective candidates. For more information: <http://business.linkedin.com/talent-solutions/products/talent-brand-index.html>

⁵ See our full report 'Adapt to survive: How professionals, employers, governments and educators must prepare for the new economy' – page 26 for details of research methodology

⁶ PwC Saratoga data

A global study by PwC into the value gained by a better talent fit

Commissioned by LinkedIn



Our recommendations

Our recommendations are organised around four US stakeholder groups:



Individuals

Future proof your career

The age of the linear career is over. Individuals shouldn't be afraid to be bold and brave in their choices and take an open-minded and long-term view of their career. This means daring to look beyond geographic and sector borders for experience and learning, anticipating the skills that'll be in demand in the future and showcasing their adaptability. The rise of social media and an increasingly connected global workforce means it's never been easier for people to identify new opportunities, plan to develop the skills, and build a professional network that will allow them to transition into new roles.



Educators

Offer courses and job training that produce adaptable people

Closer collaboration and a two-way dialogue between educators and business will help to address skills gaps and anticipate the needs of employers. There shouldn't be a hard stop between the classroom and the workplace. Use online professional networks to better track the skills in demand by employers now, and start conversations with potential students early about the training required to get them hired once their courses are complete. Adaptability is relevant to all ages, so education and training that encourages adaptable skills should be available to all – particularly older people who will need to retrain through their longer careers as they adapt to multiple roles over their lifetime.



Employers

Seek out, nurture and reward adaptable talent

Businesses need adaptable people if they're to capitalise on new opportunities in fast-changing markets – people who can be found within the organisation, or elsewhere. Recruitment, learning and development, retention and reward processes should all be designed to encourage, nurture and support adaptability. Organisations should use talent analytics to identify the hard and soft skills that they will need and then train and hire strategically. Online professional networks have made it far easier to identify relevant candidates – both active and passive – who may have the skills they need.



Governments

Create a climate of adaptability

Governments must take a lead in the national debate about adaptability, as well as actively shaping a mindset that values and rewards it. Policies that encourage greater labour mobility have their part to play – and governments should balance local concerns with the benefits that flow from greater labour mobility. But it's also about aligning education with economic need. Governments need to take a strategic approach to skilling – and then reskilling – the workforce.

For further information see our global study at www.pwc.com/talentadaptability

Contact

Scott Olsen

+1 646 471 0651

scott.n.olsen@us.pwc.com

Ed Boswell

+1 617 530 7504

ed.boswell@us.pwc.com

Toni Cusumano

+1 415 307 7376

antonia.m.cusumano@us.pwc.com

www.pwc.com/hrconsulting

PwC helps organisations and individuals create the value they're looking for. We're a network of firms in 157 countries with more than 184,000 people who are committed to delivering quality in assurance, tax and advisory services. Tell us what matters to you and find out more by visiting us at www.pwc.com.

This publication has been prepared for general guidance on matters of interest only, and does not constitute professional advice. You should not act upon the information contained in this publication without obtaining specific professional advice. No representation or warranty (express or implied) is given as to the accuracy or completeness of the information contained in this publication, and, to the extent permitted by law, PwC does not accept or assume any liability, responsibility or duty of care for any consequences of you or anyone else acting, or refraining to act, in reliance on the information contained in this publication or for any decision based on it.

© 2014 PwC. All rights reserved. PwC refers to the PwC network and/or one or more of its member firms, each of which is a separate legal entity. Please see www.pwc.com/structure for further details.

Design Services 28522 (02/14).